



# **OPERATOR'S MANUAL**

with Replacement Parts List

**SOFT SERVE  
TWIST MODEL  
SL500**

184599 10/13



Operator's Manual  
for the  
Electro Freeze Model  
SL500  
Soft Serve Freezer

# ***SAFETY FIRST!***

***Follow these four steps to safety ....***

## ***1. Recognize Safety Information ....Look for this safety alert symbol throughout this manual.***

---



When you see this symbol on your freezer or in this manual, be alert to the potential for personal injury. Follow recommended precautions and safe operating practices.

---

## ***2. Understand Signal Words ....***

---



The signal words — **DANGER, WARNING and CAUTION** — are used with the safety alert symbol (DANGER decals on the freezer may or may not have the safety alert symbol, but the message is the same). Decals with the words **DANGER, WARNING or CAUTION** appear on the freezer. **DANGER** identifies the most serious hazard. Decals with the words **DANGER or WARNING** are typically near specific hazards on the freezer. General precautions are listed on **CAUTION** safety decals.

In this manual, **CAUTION** messages with the safety alert symbol  call attention to safety messages.

---

# ***SAFETY FIRST!***

## ***3. Follow Safety Instructions ....***

---



Read and understand all safety messages in this manual. Read and understand the decal safety messages on your freezer. Take notice of the location of all decals on the freezer and keep the safety decals in good condition. Check them periodically and replace missing, damaged or illegible safety decals. The safety decals must remain in place and legible for the life of the freezer. If you need new decals, use the information and illustrations on pages iv and v of this manual to identify the decal and contact your local distributor — or H.C. Duke & Son, LLC.

***DO NOT*** attempt to operate the freezer until you read and understand all safety messages and the operating instructions in this manual.

---

## ***4. Operate Safely ....***

---



***DO NOT*** allow untrained personnel to maintain or service this machine. Failure to follow this instruction may result in severe personal injury. ***DO NOT*** operate the freezer unless all service panels and access doors are secured with screws. ***DO NOT*** attempt to maintain or repair the freezer until the main power supply has been disconnected. Some freezers have more than one disconnect switch. Contact your local Electro Freeze Distributor for authorized service.

---

## Safety Decal Locations

Do not attempt to operate the freezer until all safety precautions and operating instructions in this manual are read and understood.

Take notice of all warning, caution, instruction and information decals (or labels) on the freezer as shown in the figure on the following page. The labels have been put there to help maintain a safe working environment.

The labels have been designed to withstand washing and cleaning. All labels must remain legible for the life of the freezer. Check labels periodically to be sure they can be recognized as warning labels.

If it is necessary to replace *any* label, please contact your local authorized Electro Freeze Distributor or H. C. Duke & Son, LLC. When ready to order you will need to determine the (1) part number, (2) type of label, (3) location of label, and (4) quantity required, and include a return shipping address.

You may contact your local authorized Electro Freeze Distributor, as follows:

NAME: \_\_\_\_\_

ADDRESS: \_\_\_\_\_  
\_\_\_\_\_

PHONE: \_\_\_\_\_

or — for factory service assistance — contact H. C. Duke & Son, LLC, Electro Freeze Service Department by phone or FAX:



Phone: (309) 755-4553  
(800) 755-4545

FAX: (309) 755-9858

E-mail: [service@electrofreeze.com](mailto:service@electrofreeze.com)

(The decals on the next page are numbered 1, 2 and 3. Those numbers correspond to the numbers in the table below. The table provides the part number, description, and quantity for each decal.)

No.	Part No.	Description (Qty)
1	HC165025-02	Decal — Beater Warning Black(1)
2	HC165025-01	Decal — Beater Warning Twist (1)
3	HC165126	Decal — Panel Removal Warning (3)

**⚠ WARNING**

Hazardous rotating beater shaft. Do not operate unit with dispense head removed.

Before removing dispense head:

1. Turn all control switches to "OFF", and
2. Disconnect all power supplies. Unit may have more than one power supply.

**1** HC165025-02

**⚠ WARNING**

• Hazardous rotating beater shaft. Do not operate unit with dispense head removed.

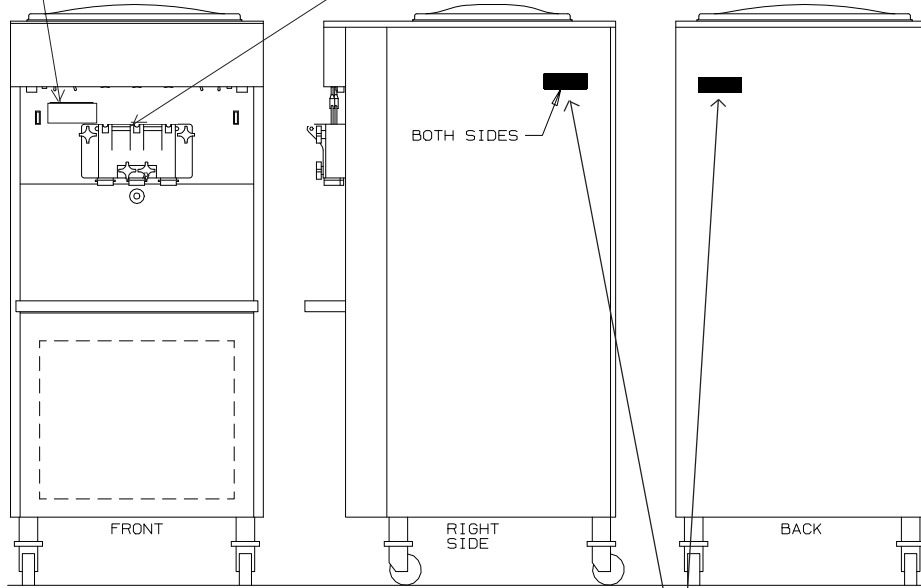
• Before cleaning machine:

1. Turn all control switches to "OFF", and
2. Disconnect all power supplies. Unit may have more than one power supply.



**2** HC165025-01

Located behind the head



**⚠ WARNING**

Hazardous moving parts.  
Machine starts automatically.  
Do not operate with panel removed.

**3** HC165126

# Table of Contents

**Safety First!** ..... ii  
**Safety Decal Locations** ..... iv

## ***PART I***

<b>1</b>	<b>Introduction</b> .....	<b>1</b>
<b>2</b>	<b>Note to Installer</b> .....	<b>1</b>
	2.1 Uncrating and Inspection .....	2
	2.2 Installation .....	3
	2.3 Electrical Requirements .....	3
	2.4 Electrical Connections .....	4
<b>3</b>	<b>Specifications</b> .....	<b>5</b>
	3.1 Particulars .....	5
	3.2 Data Plate .....	6
	3.3 Reference Information .....	6
	3.4 Installation Date .....	6
	3.5 Dimensions .....	7
<b>4</b>	<b>Part Names and Functions</b> .....	<b>8</b>
<b>5</b>	<b>Operator Controls &amp; Indicators</b> .....	<b>11</b>
	5.1 Day/Night Switch .....	11
	5.2 Selector Switch .....	12
	5.3 Reset-Overload .....	12
	5.4 Timer .....	12
	5.5 "Add Mix" Indicator Light .....	12
	5.6 Mix Feed Tube and Regulator .....	13
<b>6</b>	<b>Disassembly and Cleaning</b> .....	<b>14</b>
	6.1 Cleaning Accessories .....	14
	6.2 Disassembly Instructions .....	15
	6.3 Cleaning Instructions .....	17
<b>7</b>	<b>Assembly</b> .....	<b>19</b>



---

## Table of Contents (continued)

---

<b>8</b>	<b>Start-up Instructions .....</b>	<b>22</b>
	8.1 Sanitizing .....	22
	8.2 Priming .....	23
<b>9</b>	<b>Closing Procedures .....</b>	<b>26</b>
	9.1 Night Switch Operation .....	26
	9.2 Draining Product .....	27
<b>10</b>	<b>Soft Serve Information .....</b>	<b>28</b>
	10.1 Overrun .....	28
	10.2 Rerun .....	28
<b>11</b>	<b>Routine Maintenance .....</b>	<b>29</b>
<b>12</b>	<b>Troubleshooting Table .....</b>	<b>33</b>

---

## ***PART II***

### **REPLACEMENT PARTS with ILLUSTRATIONS \***

\* Refer to Part II Table of Contents for help with locating part numbers and illustrations.

# 1 Introduction

Gravity fed soft serve freezer model SL500 is designed to produce soft serve ice cream, ice milk, yogurt, and similar frozen dairy products, with a product serving temperature range of 15 to 25°F (-9 to -4°C). If such products are prepared from powdered concentrate, they should be precooled to 40°F (4°C) prior to introduction to the freezer. Use of other products in this machine is considered misuse (see Warranty).

This manual has been prepared to assist you in the proper operation and general maintenance of the *Electro Freeze* model SL500 freezers.

Make sure all personnel responsible for equipment operation completely read and understand this manual before operating the freezer. When properly operated and maintained, the freezer will produce a consistent quality product.

If you require technical assistance, please contact your local authorized *Electro Freeze* Distributor, as follows:

Name: \_\_\_\_\_

Address: \_\_\_\_\_

Phone: \_\_\_\_\_

For factory service assistance — contact H. C. Duke & Son, LLC, *Electro Freeze* Service Department as follows.



Phone: (309) 755-4553  
(800) 755-4545

FAX: (309) 755-9858

E-mail: [service@electrofreeze.com](mailto:service@electrofreeze.com)

# 2 Note to Installer

**This freezer must be installed and serviced by an *Electro Freeze* Distributor or authorized service technician in accordance with the installation instructions.**

**After installation the warranty registration card must be completed and returned to validate the warranty.**

## 2.1 Uncrating and Inspection

**CAUTION**

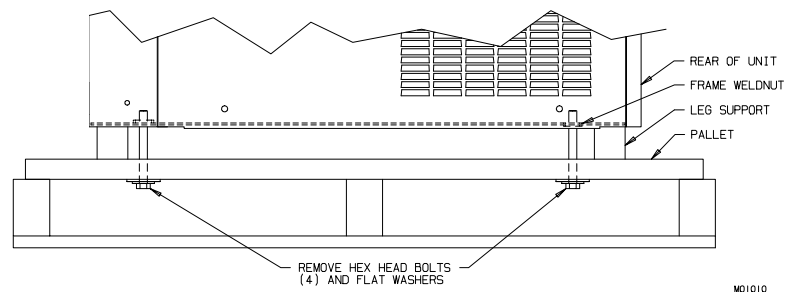
Be sure to properly support the machine when removing bolts and installing legs or casters.

When the unit is received and while the carrier is still present, inspect the shipping carton for any damage that may have occurred in transit. If the SHOCKWATCH® label indicates red and/or the carton is broken, torn, or punctured,

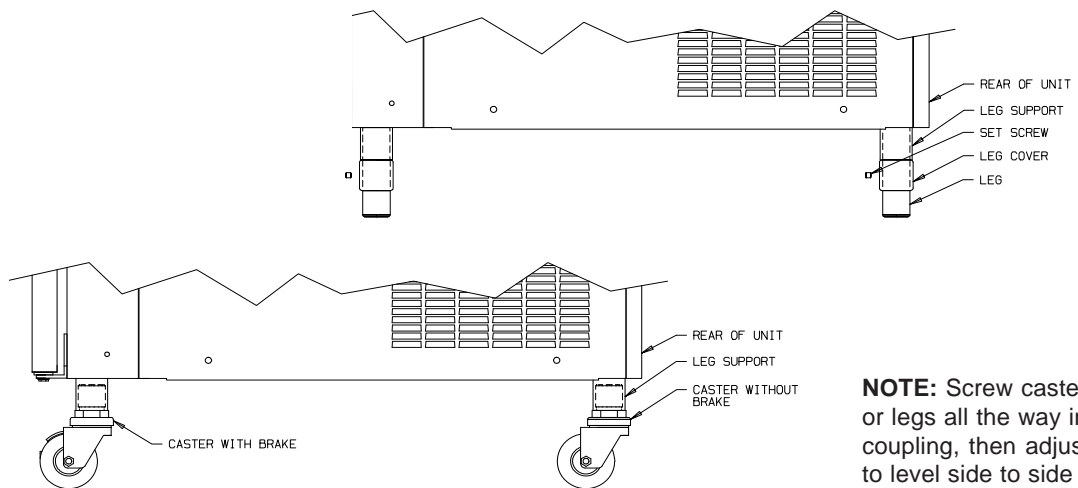
note the damage on the carrier's freight bill and notify the carrier's local agent immediately.

1. Remove the carton from the pallet, and move the machine as close as possible to the permanent location.

2. Remove the shipping bolts on the bottom of the freezer (figure 2-1) and install either the legs or casters (figure 2-2).



**Figure 2-1 Machine bolted to Shipping Base**



**Figure 2-2 Installing Mounting Legs or Casters**

**NOTE:** Screw casters or legs all the way in coupling, then adjust to level side to side with a 1/4" slope to the front.

## 2.2 Installation



**CAUTION**  
All materials and connections must conform to local requirements and be in compliance with the National Electrical Code (NEC).

1. The freezer is designed for indoor use and must be protected from outdoor weather conditions.

2. Where codes permit, Electro Freeze recommends that the floor model freezers be installed on casters and have flexible water and electrical connections for easier service and cleaning.

2. All models require a minimum 6-inch clearance on panels with louvers for adequate ventilation. Anything blocking ventilation of the freezer (including cone dispensers) will reduce the efficiency of the freezer.

3. **Water-cooled** model SL500 requires a 3/8-inch MPT water inlet and water waste connection. The connections are found on the bottom, under the compressor mounting area. They are tagged "Water Inlet" and "Water Waste." A manual shut-off valve should be installed in the water inlet line at the time of installation. The water pressure must be between 35-140 psig (241-965 kPa) for proper operation.

4. Place the freezer in its final location and adjust the legs or casters so that it is level side-to-side and the front is approximately 1/4-inch lower than the rear to allow proper drainage of the freezing cylinder.

## 2.3 Electrical Requirements



**CAUTION**  
To prevent accidental electrical shock, a positive earth ground is required.

1. Always verify electrical specifications on the data plate (figure 3-1) of each freezer. Data plate specifications will always supersede the information in this manual.

2. Supply voltage must be within  $\pm$  10% of voltage indicated on the nameplate. Also, on three-phase systems, voltage between phases must be balanced within 2%. (More than a 6 volt difference between any two voltage measurements at 208-230 volts indicates a possible imbalance.) Request your local power company to correct any voltage problem.

3. An easily accessible main power disconnect must be provided for all poles of the wiring to the freezer.

## 2.4 Electrical Connections

---



**CAUTION**

To prevent accidental electrical shock, a positive earth ground is required.

1. Freezer requires one power supply. Check the data plate for proper fuse size, wire ampacity, and electrical specifications.
2. Refer to the wiring diagram provided for proper power connections.
3. Electrical connections for model SL500 are made in the junction box located mid-level behind the front panel.
4. Use a flexible connection when permissible. Copper wires are required for connection to freezer. All materials and connections must conform to local codes and/or the National Electrical Code.
5. For all 3 phase freezers, beater shaft rotation must be clockwise as viewed from the front of the freezer.

## 3 Specifications

### 3.1 Particulars

#### SL500

Width (in/cm) .....	22.125 / 56.2
Height (in/cm) .....	58 / 146.77
Depth (in/cm) .....	30 / 76.04
Weight (lb/kg) .....	539 / 244
Cylinder Compressor .....	2 HP/10000 (BTU/hr) 1.5 kw (Motor) 3.2 kw (Cooling)
Hopper Compressor .....	1/10 hp /500 (BTU/hr)
Beater Motor .....	(2) 2 HP/1.5 kw
Refrigerant - Cylinder .....	R-404a
Refrigerant - Hopper .....	134a
Charge - WC Cylinder (lbs/kg) .....	3.75 / 1.70
AC Cylinder (lbs/kg) .....	4.375 / 1.98
Charge - Hopper (oz/kg) .....	7 / .2
Cooling .....	Air or Water
Hopper (qt/ltr) .....	(2) 16 / 15.1
Cylinder (qt/ltr) .....	(2) 3.7 / 3.5

### 3.2 Data Plate



Figure 3-1

The data plate provides important information that the operator should record and have available for parts ordering, warranty inquiries and service requests.

### 3.3 Reference Information

**Write in  
Reference  
Information  
HERE!**



Fill in the following information as soon as you receive the *Electro Freeze* SL500. (The item numbers—encircled, below—correspond to the callout numbers in figure 3-1.)

- ① **Model Number:** \_\_\_\_\_
- ② **Serial Number:** \_\_\_\_\_
- ③ **Electrical Spec: Voltage** \_\_\_\_\_  
**Phase** \_\_\_\_\_ **Hertz** \_\_\_\_\_
- ④ **Max. Fuse Size:** \_\_\_\_\_
- ⑤ **Min. Circuit Ampacity** \_\_\_\_\_

### 3.4 Installation Date

Fill in the date of installation, and the name, address, and phone number of the installer in the space provided below. This information will be needed when ordering parts or service for the freezer.

Date of installation: \_\_\_\_\_

Installed by: \_\_\_\_\_

Address: \_\_\_\_\_

Phone: \_\_\_\_\_

### 3.5 Dimensions

The dimensions of the SL500 freezer is provided in figure 3-2 below.

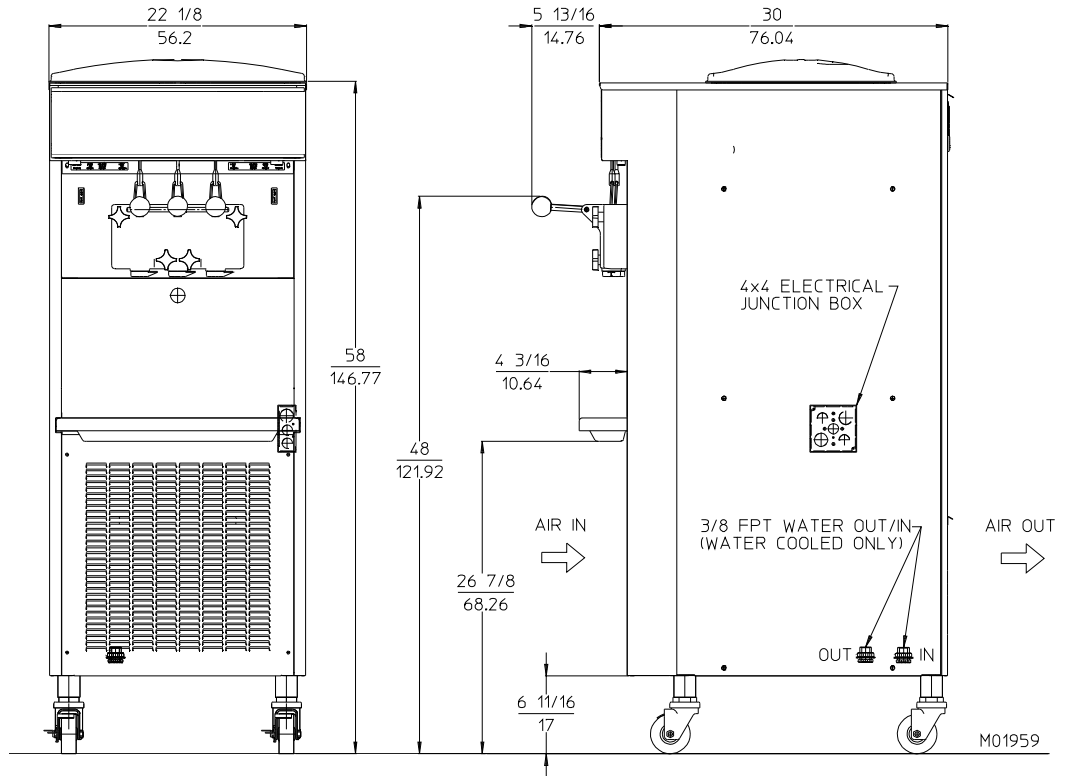
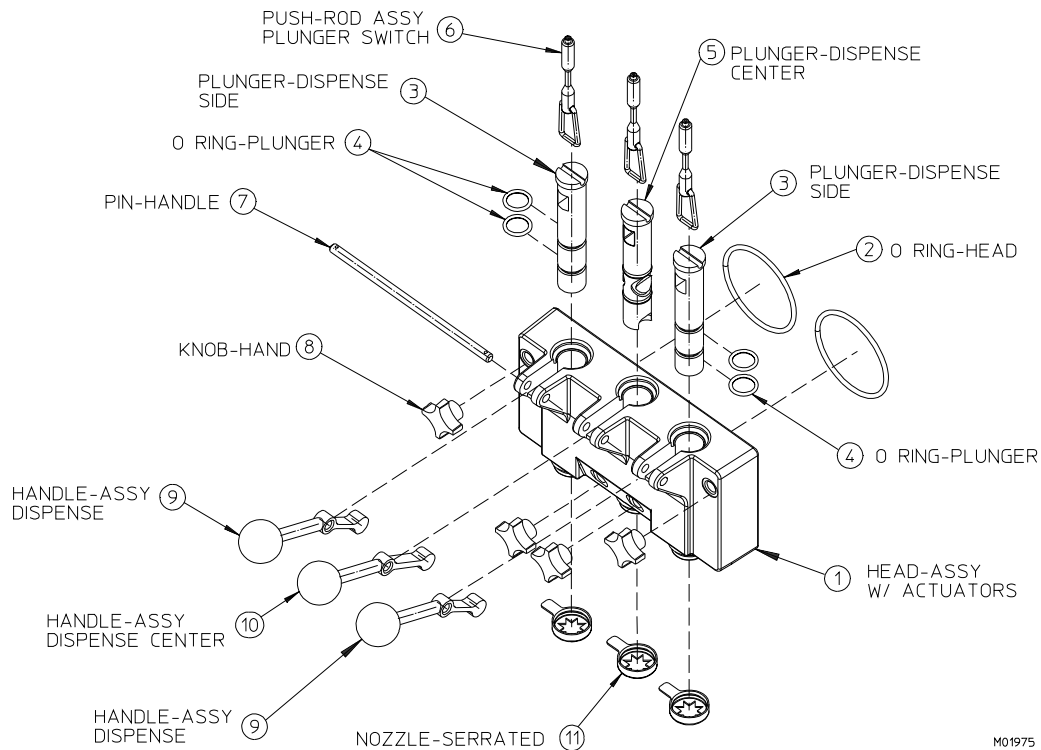


Figure 3-2 Electro Freeze Model SL500



## 4 Part Names and Functions



M01975

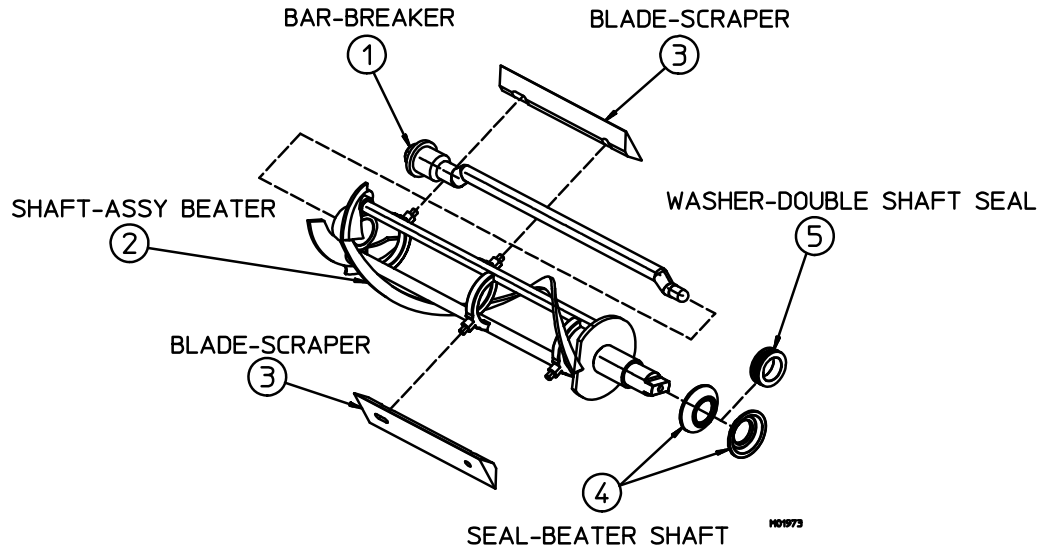
**Figure 4-1 Head Assembly**

The following descriptions refer to figure 4-1. The number preceding the part name corresponds to the number in the figure.

- |  |   |
|--|---|
| <p><b>① HEAD - DISPENSE</b><br/>Encloses the freezing cylinder and provides an opening for product to be dispensed.</p> <p><b>② O-RINGS - HEAD</b><br/>Seals the head to the freezing cylinder. Must be lubricated.</p> <p><b>③ PLUNGERS - DISPENSE - SIDE</b><br/>Seals the product opening in the head when closed. Allows product to flow when open.</p> <p><b>④ O-RINGS - PLUNGER</b><br/>Seals the plunger in the head. Must be lubricated to seal and slide freely.</p> <p><b>⑤ PLUNGER - DISPENSE - CENTER</b><br/>Seals the product opening in the head when closed. Combines ice cream from both cylinders to form swirl cones.</p> | <p><b>⑥ ROD - PLUNGER</b><br/>Starts the freezer when dispensing. Must be in place for proper operation.</p> <p><b>⑦ PIN - HANDLE</b><br/>Secures handle to the head.</p> <p><b>⑧ KNOB - HAND</b><br/>Secures the head to the freezing cylinder.</p> <p><b>⑨ HANDLE - DISPENSE - SIDE</b><br/>Opens and closes the plunger to start and stop the flow of product from the freezer.</p> <p><b>⑩ HANDLE - DISPENSING - CENTER</b><br/>Opens and closes the plunger to start and stop the flow of swirl product from the freezer.</p> <p><b>⑪ NOZZLE - SERRATED</b><br/>Forms the frozen product as it is dispensed.</p> |
|--|---|

## 4

## Part Names and Functions (continued)

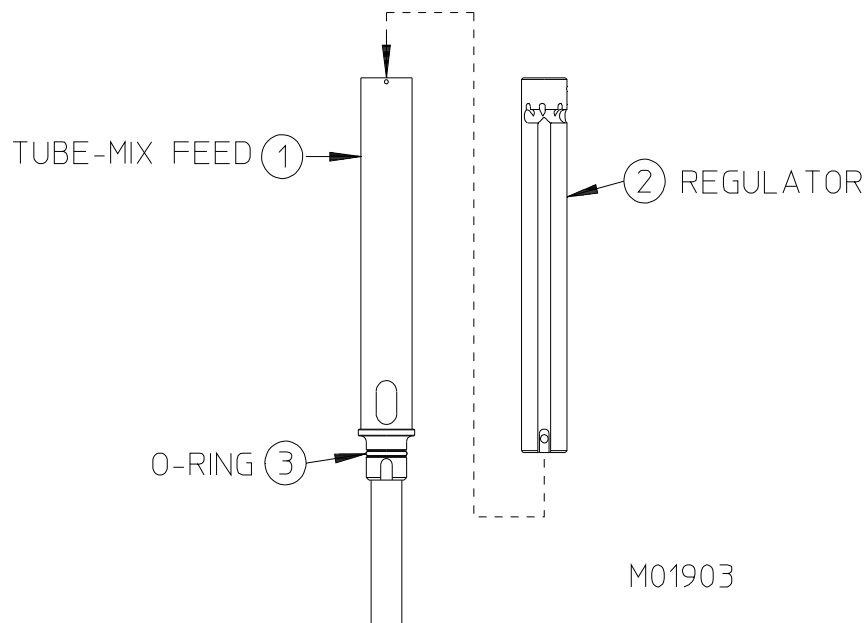


**Figure 4-2 Beater Shaft Assembly**

The following descriptions refer to figure 4-2. The number preceding the part name corresponds to the number in the figure.

- |  |  |
|--|--|
| <p>① <b>BAR-BREAKER</b><br/>Keeps product blended in the center of the beater shaft.</p> <p>② <b>SHAFT-ASSY. BEATER</b><br/>Rotates in the freezing cylinder, blending air and mix. Ejects product when dispensing plunger is opened.</p> <p>③ <b>BLADE-SCRAPER</b><br/>Scrapes the frozen product from the freezing cylinder.</p> | <p><b>SEAL-BEATER SHAFT</b><br/>Seals the opening between the freezing cylinder and the beater shaft. Consists of the following:</p> <p>④ <b>SEAL-BEATER SHAFT</b></p> <p>⑤ <b>WASHER-DOUBLESHAFT SEAL</b></p> |
|--|--|

## 4 Part Names and Functions (continued)



**Figure 4-3** *Mix Feed Tube Assembly*

The following descriptions refer to figure 4-3. The number preceding the part name corresponds to the number in the figure.

- ① TUBE - MIX FEED.**  
 Meters the correct amount of mix and air into the freezing cylinder from the hopper.
- ② REGULATOR.**  
 Provides adjustment on mix feed rate and a positive shut-off of mix flow to the freezing cylinder.
- ③ O-RING - TUBE.**  
 Seals the opening between the hopper and mix feed tube. (O-ring does not need lubrication.)

## 5 Operator Controls and Indicators

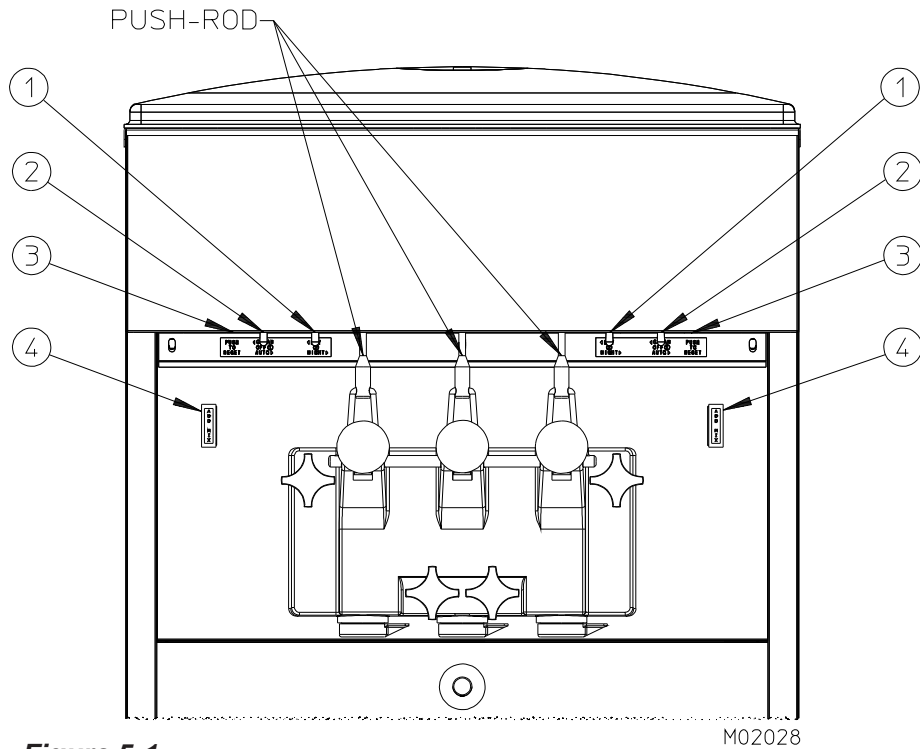


Figure 5-1

The following paragraphs describe the operator controls and indicators. Refer to figure 5-1 for location of these controls and indicators on the freezer.

**NOTE:** The dispense head must be in place before the freezer will operate.



**CAUTION**  
Test operation of the head switch prior to placing the freezer in service. See Section 11, Routine Maintenance, Monthly.

### 5.1 Day– Night Switch ①

This two-position switch controls the day and night refrigeration modes.

a. **“DAY”** (left) — The low temperature thermostat controls the system refrigeration to maintain the product serving temperature between 18° to 21°F (-8° to -6°C). This is the normal operating position.

b. **“NIGHT”** (right) — This energy-saving mode will reduce product agitation. The freezer will automatically cycle to maintain temperatures below 40°F (4°C). Use this position when the freezer will not be in use for periods of more than an hour.

## 5 Operator Controls (continued)

### 5.2 Selector Switch ②

This three-position switch these functions for your freezer.

a. “**CLEAN**” (left) — This position operates the beater only (no refrigeration to the cylinder). Always use this mode when performing cleaning and sanitizing operations.

b. “**OFF**” (center) — In this position the beater motor and refrigeration system will not operate.

**Important:**

**Do not use the “AUTO” position with water or sanitizer in the cylinder or hopper. The freezer will be damaged.**

c. “**AUTO**” (right) — This position activates both the beater motor and refrigeration unit. This is the normal operating position. Unit needs 12 seconds to internally set controls and start.

NOTE: 12 second reset time is required anytime switch is turned from “OFF” to “Auto”.

### 5.3 Reset — Overload ③

**Important:**

**If the overload trips frequently, your freezer should be checked for proper product temperature, overrun and voltage. Contact your Electro Freeze Distributor.**

This control protects the beater motor against failure from an overload condition by automatically shutting down the freezer. To restart the freezer properly, turn the SELECTOR switch to “OFF”, wait 2-3 minutes, then depress the red reset button and turn the SELECTOR switch back to the “AUTO” or “CLEAN” position.

### 5.4 “ADD MIX” Indicator Light ④

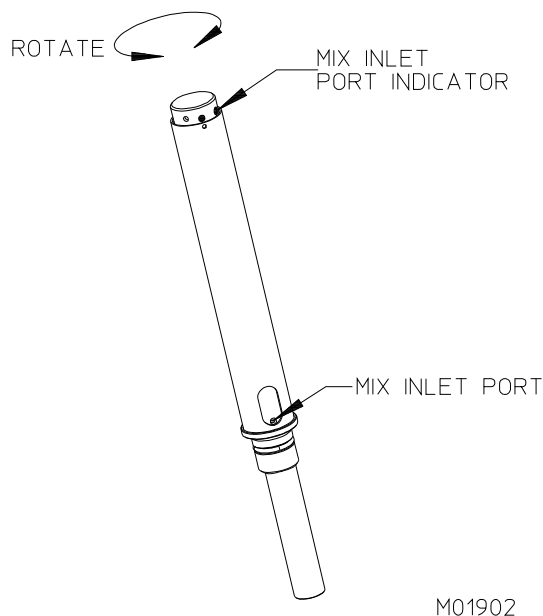
**Important:**

**If proper mix level is not maintained, a freeze-up may occur and may damage the freezer.**

When blinking, this light indicates the mix in the hopper is at a low level and should be refilled as soon as possible. Always maintain at least 2 inches (5.1 cm) of mix in the hopper. For best operating results, keep hopper full.

## 5 Operator Controls (continued)

### 5.5 Mix Feed Tube & Regulator



**Figure 5-3**

This three-position regulating device (figure 5-3) meters the correct amount of mix and air into the freezing cylinder.

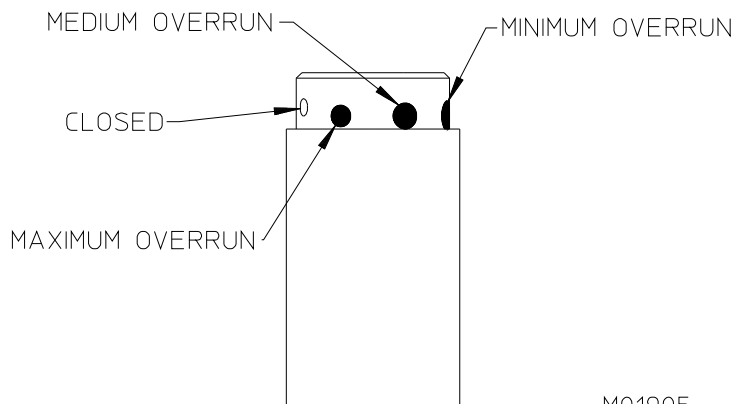
1. Locate the round indent near the top of the mix tube cylinder. Align this indent to the center range of the three indent pattern on the mix feed regulator.

2. The plastic mix feed regulator may be adjusted within the three indent range to obtain an optimum product overrun and dispense speed.

3. The largest indent setting will allow the least overrun. The smallest indent setting will allow the most air in the cylinder and is used for a higher overrun. (see figure 5-4)


During periods of idle or night operation, place the mix inlet port to the closed position. At this setting, mix and air flow are shut off to the cylinder.

**Important:**  
***If product is dispensed when the regulator is in the "CLOSED" position, a freeze-up will occur and may cause damage to the freezer.***



**Figure 5-4**

# 6 Disassembly and Cleaning



**CAUTION**  
To avoid electrical shock or contact with moving parts, make sure all switches are in the "OFF" position and that the main power supply is disconnected. Some freezers have more than one disconnect switch.

The cleaning and sanitizing instructions explained in this manual are required to maintain a clean, sanitary freezer. The freezer should be disassembled, cleaned, reassembled, lubricated and sanitized daily to ensure the best possible product quality and freezer operation.

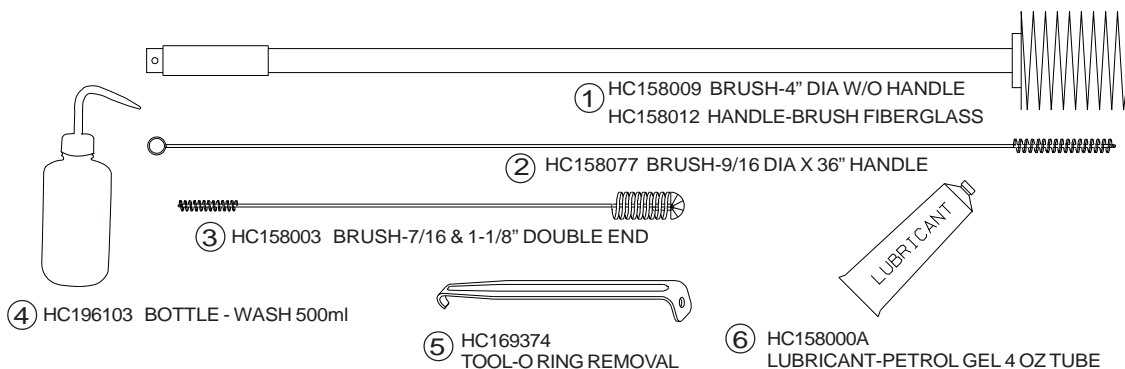
Persons assembling, cleaning, or sanitizing the freezer must wash and sanitize hands and forearms with an approved sanitizer.

It is important that the freezer be disassembled, washed, lubricated and sanitized before operation.

## 6.1 Cleaning Accessories

The following accessories shipped with the freezer are necessary for cleaning, sanitizing and disassembly/assembly.

- |  |   |
|--|---|
| <p><b>① HC150009 BRUSH. HC158012 HANDLE.</b><br/>4-inch diameter with 36-inch handle, used for cleaning the cylinder.</p> <p><b>② HC158077 BRUSH.</b><br/>9/16 inch with 36 inch handle, used for cleaning the drain tube.</p> <p><b>③ HC158003 BRUSH.</b><br/>Double end, 1-1/8 inch diameter and 7/16 inch diameter, used for cleaning the mix inlet tube, mix feed tube, head and general cleaning.</p> <p><b>④ HC196103 BOTTLE - WASH 500ml</b><br/>500ml squeeze bottle used to clean out small openings.</p> | <p><b>⑤ HC169374 TOOL - O-RING REMOVAL.</b><br/>Aids in removing O-rings from plungers, dispense head, and mix feed tube.</p> <p><b>⑥ HC158000A LUBRICANT - PETROL GEL</b><br/>Approved lubricant for moving parts and O-rings. See assembly instructions for lubricating points.</p> <p><b>⑦ HC115536 KIT - O-RING. (NOT SHOWN)</b><br/>This kit contains all O-rings and seal needing replacement on a regular basis.</p> |
|--|---|



**Figure 6-1 Accessories**

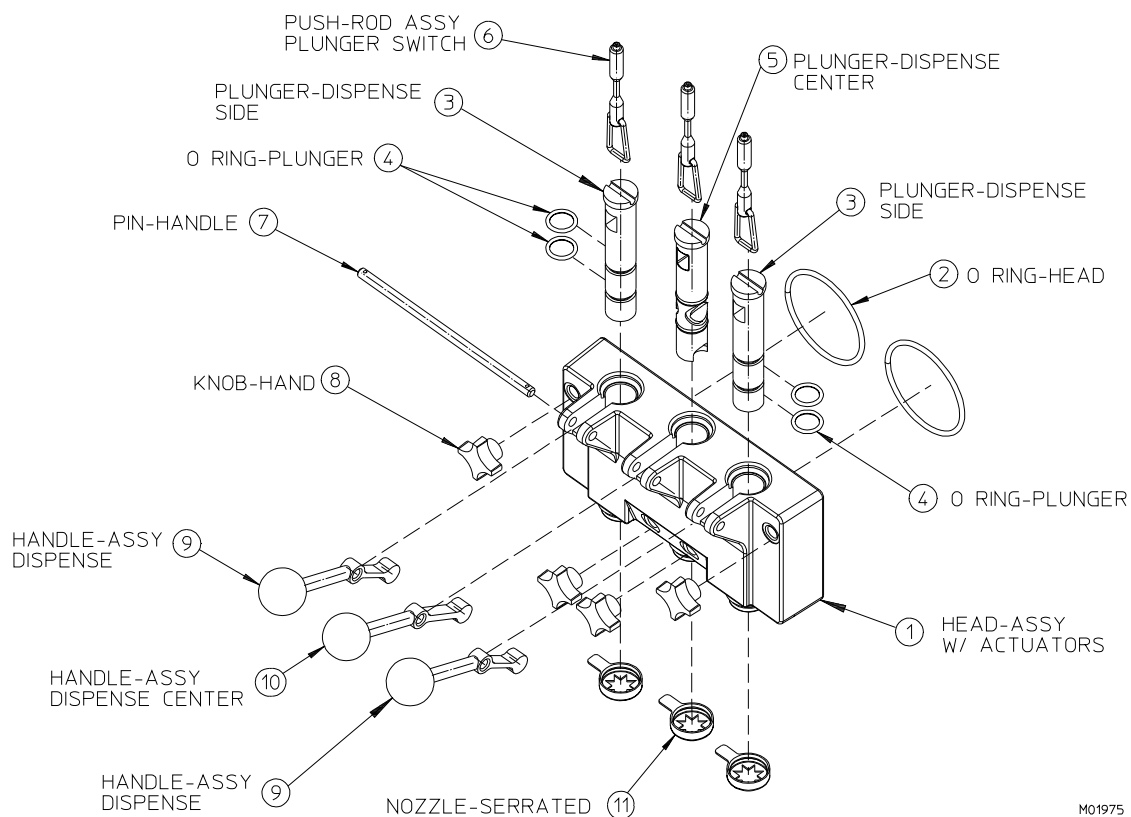
## 6.2 Disassembly Instructions



### CAUTION

To avoid electrical shock or contact with moving parts, make sure all switches are in the "OFF" position and that the main power supply is disconnected. Some freezers have more than one disconnect switch.

It is important that the freezer be disassembled, washed, lubricated and sanitized before operation. For maximum life on moving parts, disassemble and sanitize at the end of every day of operation.



M01975

**Figure 6-2**

1. If there is product in the freezer, refer to Section 9, Closing Procedures, 9.2 Draining Product.
2. Remove plunger rods (6, figure 6-2) by lifting up and swinging the bottom out and down.
3. Remove the hand knobs (8) and gently pull the dispensing head (1) straight out.
4. Remove the beater shaft (1, figure 6-3) from each cylinder. Then remove breaker bar (1), scraper blades (3) and shaft seal (3,4) from the beater shafts. Remove the cup seals (4) from the washer (5) on the shaft seal assembly.

— continued

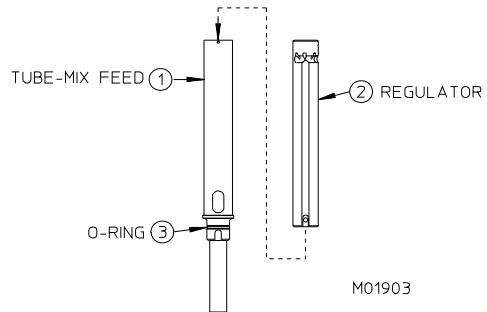


## 6.2 Disassembly Instructions (continued)

3. From the dispense head (1, figure 6-2) remove the handle pin (7), handles (9,10), plungers (5,3) and nozzles (11). Remove head o-rings (2) and the o-rings from plungers (4).

5. Remove hopper cover, drip tray and insert.

6. Remove the mix feed tube (figure 6-4) from the hopper.

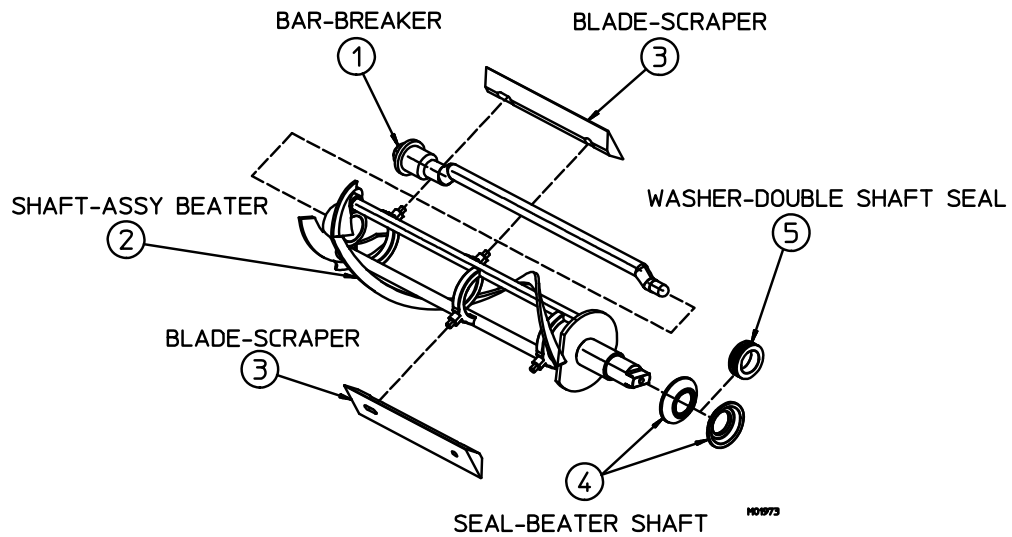


**Caution**

**To prevent bacteria growth, remove all O-rings when cleaning. Failure to do so could create a health hazard.**

**Figure 6-4**

7. Remove the O-ring (3) from the mix feed tube (1). Remove the regulator (2) from the mix feed tube.



**Figure 6-3**

## 6.3 Cleaning Instructions

The cleaning instructions explained in this section are procedures to remove bacteria and maintain a clean, sanitary freezer. The soft serve freezer must be disassembled, washed and sanitized according to the instructions in this manual. Always sanitize before start-up to ensure the best possible cleanliness.



### CAUTION

Electric shock hazard. Do not splash water on switches or allow water to flow onto electrical components inside the machine.



### CAUTION

To prevent bacteria growth, remove all o-rings when cleaning. Failure to do so could create a health hazard.

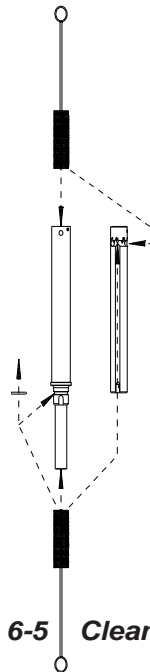


Figure 6-5 Clean the mix feed tube

**NOTE:** It is your responsibility to be aware of the requirements for meeting federal, state, and local laws concerning the frequency of cleaning and sanitizing the freezer.

1. Prepare a three-compartment sink for washing, rinsing, and sanitizing parts removed from the freezer, per applicable health codes. Also, prepare a clean surface to air-dry all parts.

#### **Important:**

**Do not use unapproved sanitizer or laundry bleach. These materials may contain high concentrations of chlorine bleach and will chemically attack freezer components.**

**NOTE:** The sanitizer should be mixed according to the manufacturer's instructions to yield 100 parts per million (PPM) available chlorine solution. (example: Stera Sheen Green Label). Use warm water (100 to 110°F or 38 to 43°C) to wash, rinse, and sanitize. Make sure the sanitizer is mixed thoroughly and has completely dissolved.

2. Wash all parts removed from the freezer thoroughly with a warm, mild dish detergent solution. Clean the following parts with the appropriate supplied brush:

- The mix feed tube, regulator main bore and cross holes (figure 6-5).
- The head plunger openings, center plunger ports, breaker bar cavities, o-ring grooves, dispense nozzle mounting rings and mix ports (figure 6-6).
- The shaft seals, washers, plunger o-ring grooves and nozzles (figure 6-7).

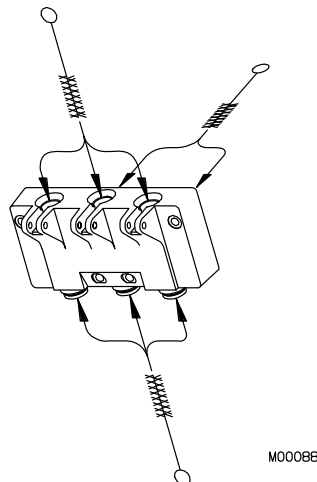
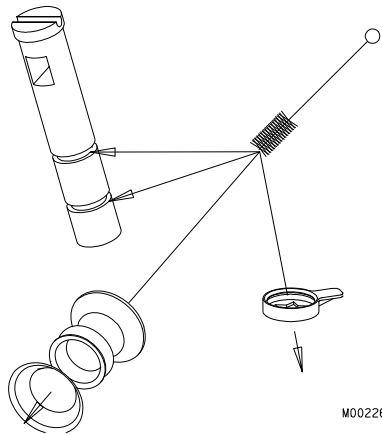


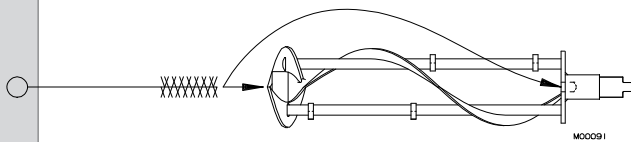
Figure 6-6 Clean the head ports

— continued

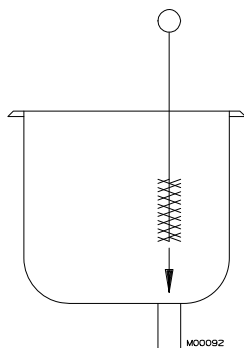
## 7.3 Cleaning Instructions (continued)



**Figure 6-7** Clean shaft seal, washer, plunger, and nozzle



**Figure 6-8** Clean beater shaft



**Figure 6-9** Clean hopper and mix feed port

**Replace worn brushes. Use only Electro Freeze original or authorized replacement parts.**

d. The beater shaft inside the front collar and the hole on the rear flange (figure 6-8).

**Important:**

**Do not leave parts in sanitizer for more than 15 minutes.**

3. Using a warm mild dish detergent solution thoroughly brush:

a. the hoppers and the mix feed tubes from the hopper to the cylinders. (figure 6-9).

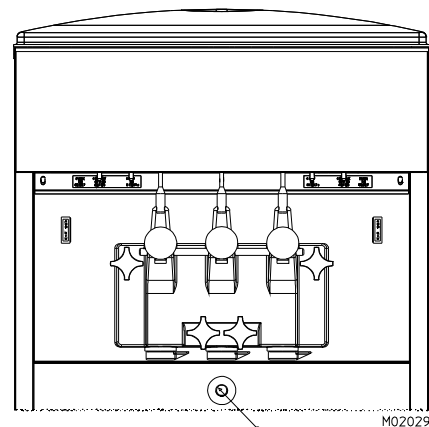
b. the inside of the cylinders making certain to clean the back walls.

c. the inside of the drain tube (figure 6-10). Dip the brush in the dish detergent solution and force brush into the drain tube until it stops - repeat until clean.

4. Then brush the mix feed tubes, cylinders and drain tube with clear water following with sanitizing solution.

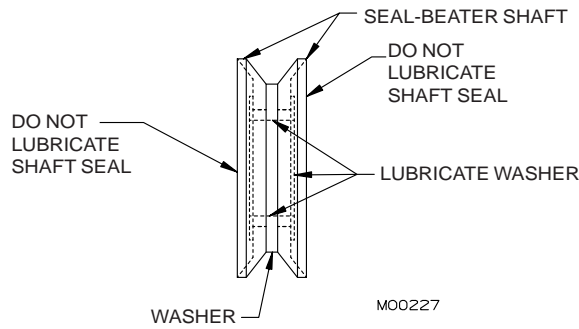
5. Remove the drip tray and insert. Wash in a warm dish detergent solution, rinse with clear water and place in sanitizing solution for 5 minutes.

6. Wash the outside of the freezer and inside of the cabinet with a warm dish detergent solution. Rinse with clear water



**Figure 6-10** Clean inside of drain tube

# 7 Assembly

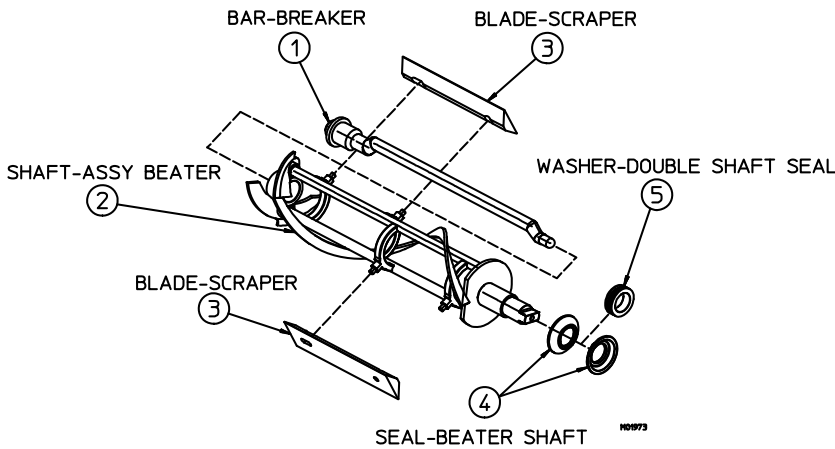


**Figure 7-1 Lubricate shaft seal**

Correct assembly of the freezer is essential to prevent leakage of the product and damage to the freezer. To assemble the freezer you will need an approved lubricant, such as Petrol Gel. Make sure all parts of the assemblies have been washed and sanitized before assembling. Follow these directions for each cylinder of the freezer.

**CAUTION**

To avoid electrical shock or contact with moving parts, make sure all switches are in the "OFF" position and that the main power supply is disconnected. Some freezers have more than one disconnect switch.



**Figure 7-2 Assemble beater shaft assembly**

1. Persons assembling the freezer must first wash and sanitize their hands and forearms with an approved sanitizer.

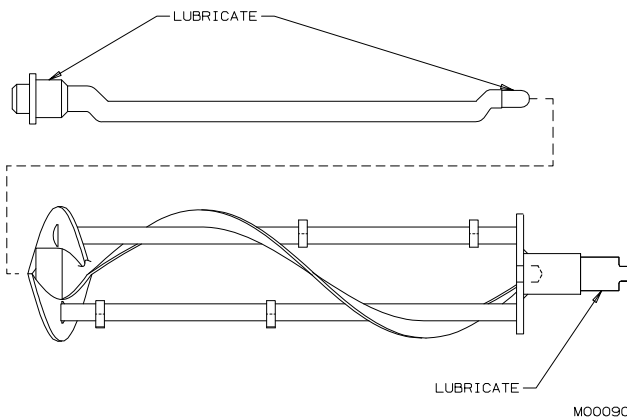
2. To assemble the shaft seal, install the cup seals on the plastic washer. Apply a moderate amount of approved sanitary lubricant (such as Petrol Gel) to the washer. Do not allow any lubricant to come in contact with the bell-shaped rubber portions of the seal (figure 7-1).

3. Install the shaft seal over the rear of the beater shaft, (figure 7-2).

4. Apply lubricant to the bearing areas of the breaker bar (figure 7-3).

5. Place the scaper blades on the beater shaft, making sure the blades are installed properly.

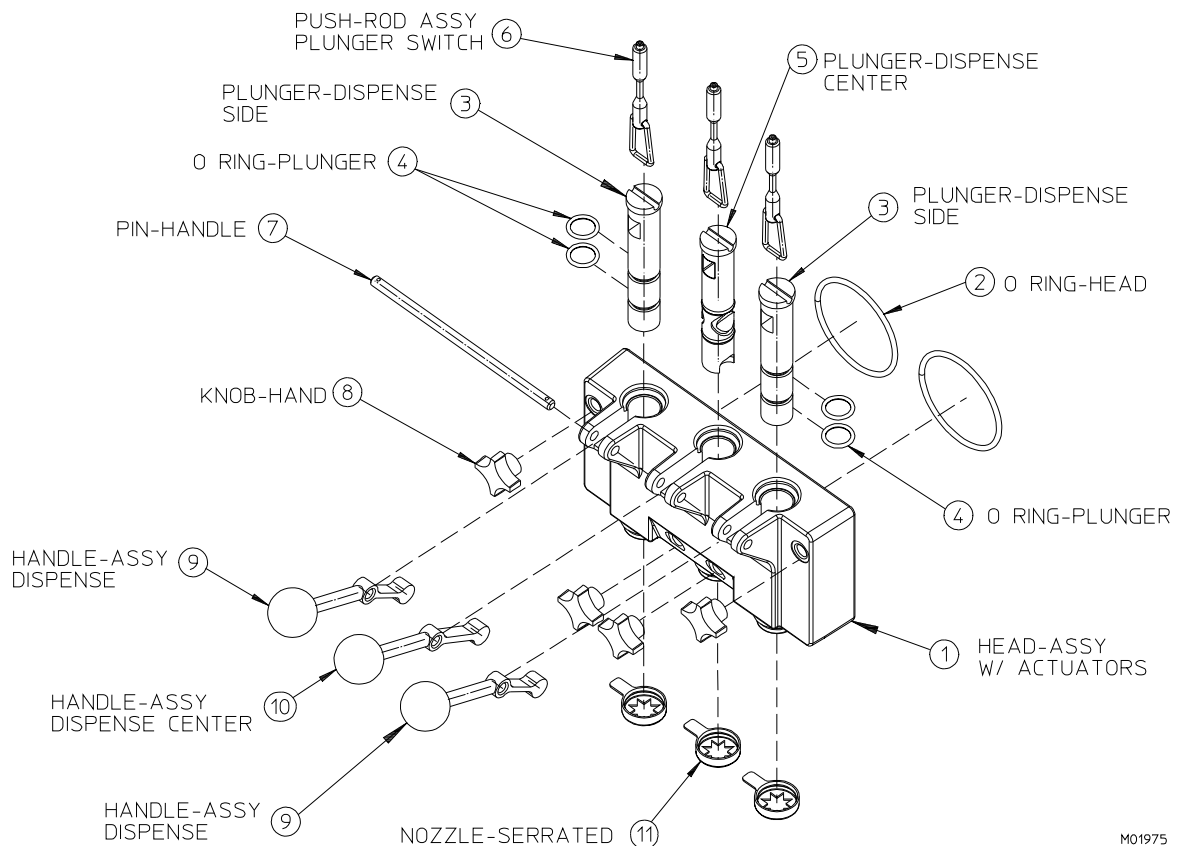
6. Slide the breaker bar into the center of the beater shaft, making sure the bar fits into the hole in the rear beater shaft disc (figure 7-2).



**Figure 7-3 Lubricate bearing areas of breaker bar**

— continued

## 7 Assembly (continued)



M01975

**Figure 7-4 Head Assembly**

7. Insert the assembled beater shaft into the cylinder by placing the rear blade on the bottom of the cylinder. This will center the beater shaft and allow alignment with the drive coupling. Rotate the beater assembly while pushing, until the shank has engaged the coupling. Install both beater shafts.

8. Install and lubricate the O-rings (4, figure 7-4) (see O-ring Chart - Replacement Parts Manual) on the dispensing plungers (4,5) and insert half-way into the head (1).

9. Install and lubricate the two 4-inch head O-rings (2).

10. Position the handles in the head assembly by placing the 2 shorter handles (9) on the sides and the longest handle (10) in the center. Lock in place with the handle pin (7).

**Important:**

**Excessive force will damage the head. Do not use tools to tighten.**

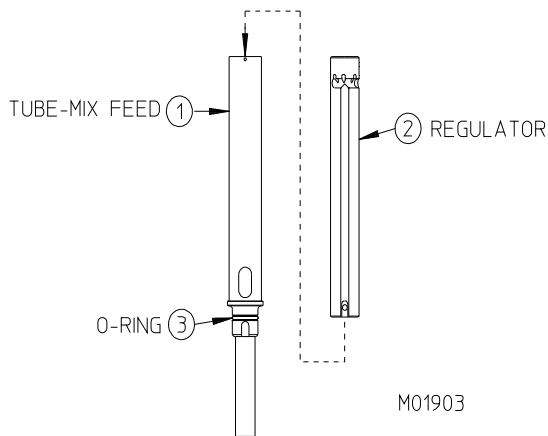
11. Install the dispensing head onto the freezer by aligning the studs with the holes in the head and sliding toward the freezer. Tighten hand knobs evenly, finger-tight only.

12. Install the plunger rods (6). The nozzles (11) will be installed on the mix outlet at the bottom of the head after sanitizing.

13. Install the o-ring (3) on the mix feed tube (1), as shown in figure 7-5.

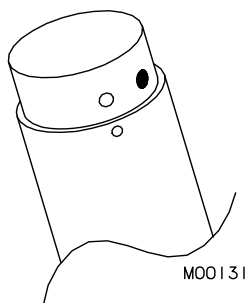
— continued

## 7 Assembly (continued)



1. Install the o-ring on the mix feed tube (figure 7-5). Lightly lubricate the o-ring. Insert the white plastic regulator into the mix feed tube assembly. Lift slightly and turn to lock the regulator in the "CLOSED" (see figure 7-6).

**Figure 7-5 Mix Feed Tube Assembly**



**Figure 7-6 Closed — position**


## 8 Start-up Instructions

### 8.1 Sanitizing

The washing and sanitizing instructions explained in this section are procedures to remove bacteria and maintain a clean, sanitary freezer. The freezer must be disassembled and washed according to the instructions in this manual before sanitizing to ensure the best possible cleanliness. Follow these directions for each cylinder to be used.

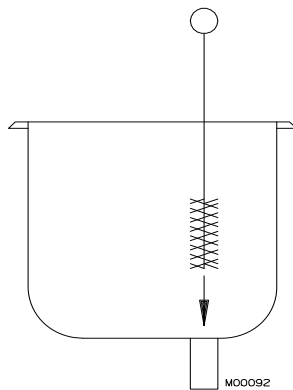
**CAUTION**

To prevent bacteria growth, use only approved sanitizers to sanitize the machine. Sanitizing must be done just prior to starting the machine. Failure to do so could create a health hazard.



**NOTE:** It is your responsibility to be aware of and conform to the requirements for meeting federal, state and local laws concerning the frequency of cleaning and sanitizing the freezer.

**Important:**  
*This sanitizing step is always done just prior to starting the freezer.*



**Figure 8-1** Sanitize hopper and its components

1. Wash and sanitize your hands and forearms.

2. Prepare 2 gallons (7.6 liters) of sanitizing solution for each hopper. The sanitizing solution must be mixed according to manufacturer's instructions to yield 100 PPM (parts per million) available chlorine solution (example: Stera-Sheen Green Label). Use warm water (100-110°F or 38-43°C) to wash, rinse, and sanitize. Make sure sanitizer is mixed thoroughly and has completely dissolved.

**Important:**  
*Do not use unapproved sanitizers or laundry bleach. These materials may contain high concentrations of chlorine and will chemically attack freezer components.*

3. Make sure the mix feed tube assembly is in the bottom of the hopper pan.

**Important:**  
*Never let the sanitizer remain in the freezer for more than 15 minutes.*

**Important:**  
*Do not insert any tools or objects into the mix feed port or head dispensing hole while the freezer is running.*

4. Pour sanitizing solution into the hopper pan. Using a clean brush, scrub the hopper walls, mix level sensor, and the mix feed port from the hopper to the cylinder, as shown in figure 8-1.

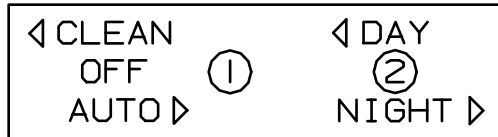
5. Wash down the inside of the hopper cover.

6. Reconnect main power supply.

**Important:**  
*Do not use the "AUTO" position with sanitizer in the cylinder. The freezer will be damaged.*

— continued

## 8.1 Sanitizing (continued)



**Figure 8-2 Selector (Toggle) Switch Positions**

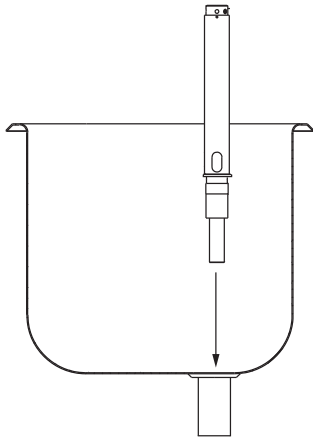
7. When the cylinder has filled with sanitizing solution, turn the selector switch to the "CLEAN" position (figure 8-2) and allow the beater to run for 5 minutes. During this time period, check for leaks around the head, plunger and drain tube.

8. Place an empty container under the dispensing head and drain the sanitizing solution by opening the plunger to allow cylinder and hopper to empty. Open and close the plunger at least 10 times during draining to sanitize the port area of dispense head.

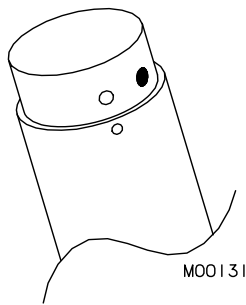
9. When the sanitizing solution has drained from the freezer, turn the selector switch to the "OFF" position.



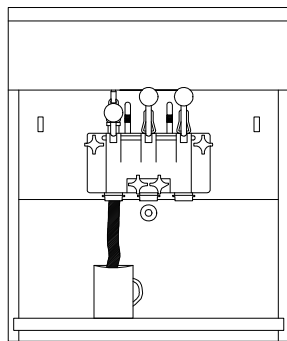
## 8.2 Priming



**Figure 8-3 Mix Feed Tube Installation**



**Figure 8-4 Closed — position**



**Figure 8-5 Pure mix**

Priming the freezer removes all excess sanitizer from the freezing cylinder, and sets the proper overrun for the first cylinder of product.

1. Make sure that your hands, forearms, and all freezer assemblies are sanitized.
2. Insert the mix feed tube assembly into the hopper drain outlet. (figure 8-3)

**Important:**

**Looking at the top of the mix feed tube assembly the white dot on the white plastic tube (regulator) must be in line with the alignment mark on the metal mix feed tube. This is the closed position. (figure 8-4).**

3. Place a bucket under the dispense head. (figure 8-5)
4. Fill the mix hopper with mix.
5. Open the plunger by pulling the dispense handle down. Lift the white plastic regulator in the mix feed tube, by turning slightly. Hold the regulator up. When pure mix is flowing from the dispense head close the dispense handle. (figure 8-5)

**Important:**

**Failure to completely remove sanitizer or water from the freezing cylinder before placing in "AUTO" will damage the freezer.**

## 8.2 Priming (continued)

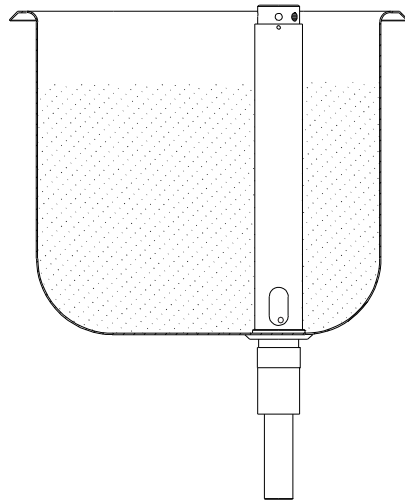


Figure 8-6 "CLOSED"—position

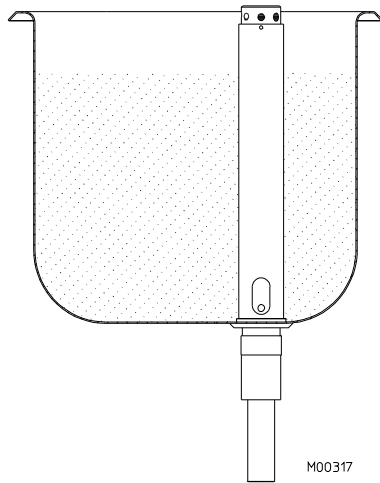


Figure 8-7 "OPEN"—position

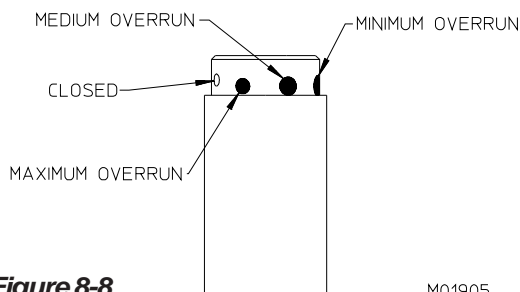


Figure 8-8

6. Allow mix to continue flowing into the cylinder until the mix in the hopper stops bubbling then lower the white plastic regulator all the way down in the "OPEN" position with the smallest black hole aligned (figure 8-7).

**Note: The largest indent setting will allow the least overrun. The smallest indent setting will allow the most air in the cylinder and is used for a higher overrun. (figure 8-8)**

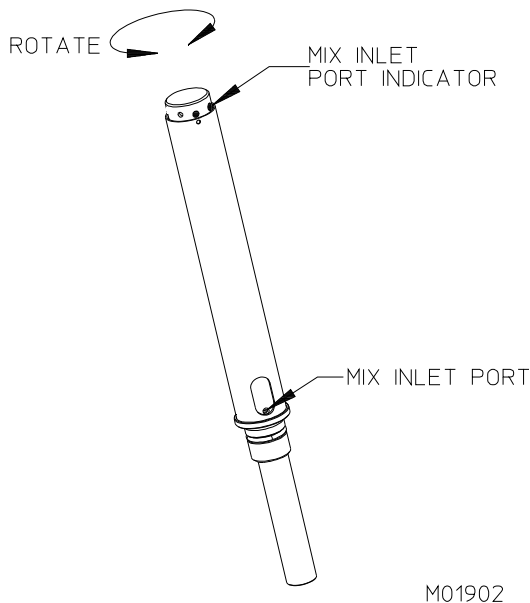
7 Place the selector switch to the "AUTO" position and the DAY/ NIGHT switch to "DAY".

8 Repeat Steps 1 - 7 for the other side of the freezer.

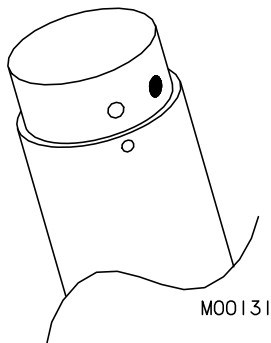
9. Sanitize and install serrated nozzles onto the head.

## 9 Closing Procedures

### 9.1 Night Switch Operation



**Figure 9-1** Mix Feed Tube Positions



**Figure 9-2** Closed — night operation

1. In areas where state and local health codes allow, the freezer may be switched to night operation, which will allow the freezer to cycle all night and maintain 40°F (4°C) or lower product in the cylinder and hopper.

2. To switch the freezer to the night mode, leave the selector switch in the “AUTO” position and place the day/night switch in the “NIGHT” position.

3. Remove nozzles, and clean the drip tray assembly and all soiled surfaces with soap and water. Use sanitizing solution in a rinse bottle and brush to clean the bottom of the plunger openings.

4. Turn the mix feed regulator to the “CLOSED” position as shown in figure 9-2.

5. Check mix level in hopper to ensure that there is enough mix to keep the indicator light off, add mix if necessary. **Do not dispense product when the mix feed regulator is in the “CLOSED” position.**

6. To start the machine after using the “NIGHT” mode, place back the day/night switch to “DAY” mode and replace the sanitized nozzles.

7. “OPEN” the mix feed regulator and fill the hopper with mix.

## 9.2 Draining Product from Freezer

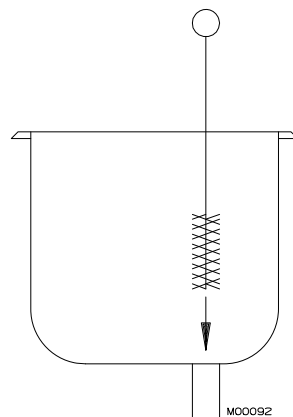
**Note:** It is your responsibility to be aware of and conform to the requirements for meeting local, state, and federal laws concerning the frequency of cleaning and sanitizing the freezer.

To remove frozen product from the cylinders, perform the following steps:

1. Place the selector switches in the "CLEAN" position.
2. Remove mix feed tubes from the hoppers.
3. Let the beaters run for 5 minutes. This will allow the product in the cylinders to soften.
4. Place a clean, sanitized container under the dispensing nozzles.
5. Dispense the semi-frozen product until it quits dispensing. If local health codes permit, cover the rerun product container and place it in the cooler. (See Section 10, SOFT SERVE INFORMATION)

**Important:**  
**Do not use hot water. Damage to the freezer could occur.**

6. Close plungers and pour two gallons of warm water into each hopper.



**Figure 9-3 Sanitize hopper**

7. Dispense the warm water. Repeat until the water coming out is clear.

8. Drain the remainder of the warm water from the cylinder. Place selector switch in the "OFF" position.

9. Prepare 2 gallons (7.6 liters) of sanitizing solution for each hopper. Sanitizing solution must be mixed according to manufacturer's instructions to yield 100 PPM available chlorine solution (example: Stera- Sheen Green Label).

10. Pour sanitizing solution into the hopper pan. Using a clean brush, scrub the hopper walls, mix level sensor, and the mix feed port from the hopper to the cylinder, as shown in figure 9-3.

**Important:**  
**Do not use the "AUTO" position with sanitizer in the cylinder. The freezer will be damaged.**

11. When the cylinder has filled with sanitizing solution, turn the selector switch to the "CLEAN" position and allow the beater to run for 5 minutes.

12. Place an empty container under the dispensing head and drain the solution by opening the plunger to allow cylinder and hopper to empty.

13. When the sanitizing solution has drained from the freezer, turn the selector switch to the "OFF" position.

14. Proceed to disassembly, cleaning and sanitizing instructions.

## 10 Soft Serve Information

### 10.1 Overrun

As mix is frozen in the freezing cylinder, air is incorporated into the mix to increase its volume, as well as enhance the taste and texture of the finished product. The increase in volume is called overrun. Fifty percent overrun translates to a volume increase of 50% — 10 gallons of liquid mix has become 15 gallons of finished product.

Controlled overrun is important to maintain consistency in product quality. Too much overrun (air) results in a light, fluffy product lacking the cold, refreshing appeal of a quality product. Too little overrun results in a wet, heavy product.

To correctly measure the overrun perform the following steps:

1. Place an empty pint container on the scale\* and adjust your scale to zero.
2. Remove container from scale and fill the container to the top with liquid mix. Place container on scale and record the weight.

3. Replace liquid mix with frozen product, being sure to leave no voids or air spaces in the container.

4. Strike off the excess product so it is even with the top of the container and measure the weight.

5. Use the following formula to figure overrun percentage:

*“Weight of liquid mix minus weight of frozen product/divided by the frozen weight. Multiply by 100.”* See example.

**Example:**

**Weight of 1 pint of mix = 18 oz.**

**Weight of 1 pint frozen product = 12 oz.**

**Difference = 6 oz.**

**6 oz. divided by 12 oz. = .5**

**.5 x 100 = 50% overrun**

\*Your Electro Freeze Distributor can provide a scale (P/N HC158049) that is graduated in overrun percentage.

### 10.2 Rerun

Rerun is product that has been drawn through the freezer into a container and has melted down to be re-processed. If local health codes permit the use of rerun make sure to follow these procedures:

1. Store rerun mix in a clean, sanitized container.
2. Store in a cooler with a temperature below 40° F (4.4° C).
3. DO NOT prime the machine with rerun. Always skim off and discard foam — then mix the rerun with fresh mix in a ratio of 50/50 and add to the hopper during operation.

4. Once a week, run the mix as low as possible and discard after closing. Product from Freezer (see Section 9.2). This will break the rerun cycle and reduce the possibility of high bacteria and coliform counts.

**NOTE: Rerun product is unable to accept the same amount of air as fresh product. As a result, the quality will be affected and the product may appear grainy and icy.**

For further information contact your local Electro Freeze Distributor or the Service Department of H. C. Duke & Son, LLC. at (309) 755-4553, (800) 755-4545, or e-mail [service@electrofreeze.com](mailto:service@electrofreeze.com).

# 11 Routine Maintenance

Electro Freeze recommends the following schedule to help maintain your freezer in like-new operating condition. Take the time to learn and perform these routine procedures and receive in return many years of valuable service from your freezer. *Protect your investment!*

## DAILY

1. Disassemble, wash, rinse, sanitize, air dry, reassemble and sanitize all parts which come into contact with the mix.



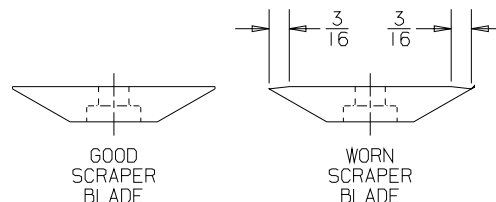
### CAUTION

To prevent bacteria growth, remove all O-rings when cleaning. Failure to do so could create a health hazard.

2. Clean the cylinder and drain tube with the appropriate brushes.
3. Upon cleaning, inspect and lubricate all seals and O-rings as instructed that come into contact with mix. Replace any O-ring that is worn, torn, or loose-fitting.
4. Wipe all exterior surfaces of the freezer to remove any splattered mix.
5. Check overrun and temperature of the product.

## WEEKLY

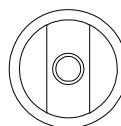
1. Carefully inspect all parts for wear, including seals, o-rings, and blades. Replace as required. Replace blades if worn  $\frac{3}{16}$  (5mm) or more.



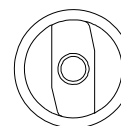
GOOD  
SCRAPER  
BLADE

WORN  
SCRAPER  
BLADE

2. Check the beater tangs and drive shaft for wear.



GOOD BEATER  
SHAFT TANG



WORN BEATER  
SHAFT TANG

A worn coupling will have a nonparallel shape on the drive opening.

## 1500 HOURS OF OPERATION

1. **Gear Reducer - Initial Oil Change**  
Have the oil in the gear reducer changed by your Electro Freeze Distributor.

# 11 Routine Maintenance (continued)

## MONTHLY

### 1. Test Head Switch.

The head switch feature is designed to prevent the beater shaft from being accidentally activated. It is essential that the proper operation of this switch be verified on a routine basis. Use the following instructions to test for proper operation. Check each side of the freezer using this procedure.

1. Be sure all switches are in the "OFF" position.
2. Disconnect the main power supply.
3. Remove the dispense head and beater shaft assembly.
4. Connect the main power supply.
5. Turn the selector switch to the "CLEAN" position.



**CAUTION**  
Moving parts. **DO NOT** place hands in the freezing cylinder. Severe personal injury could result.

6. Look inside the freezing cylinder toward the rear, the drive shaft coupling should **NOT** be turning. Turn the switch "OFF" and disconnect the main power supply.

7. If the drive shaft coupling is turning, or you are unable to determine whether or not the shaft is turning, turn the switch to the "OFF" position, disconnect the main power supply and contact your Electro Freeze distributor for service. **DO NOT** place the freezer in service until the problem has been fixed.

### 2. Water Condenser.

Check the outlet water temperature of water-cooled condensers at the floor drain. Water temperatures should be about 95°F (35°F) with a 70° (21°F) water inlet temperature.



# 11 Routine Maintenance (continued)

## QUARTERLY

1. Have your Electro Freeze Distributor check the refrigeration system and make the necessary adjustments.

2. Both air and water cooled freezers have an air condenser. The condenser fins need to be cleaned by your Electro Freeze Distributor to remove all forms of dirt, lint, and dust.

**Important:**

**Never use a screwdriver or sharp object to clean between fins.**

## SEMIANNUALLY

1. Contact your Electro Freeze distributor to replace drive belts.

2. On air cooled and air cooled remote freezers have your Electro Freeze distributor check the condenser fan motor oil.

2. Have the gear reducer oil changed by your Electro Freeze distributor.

**NOTE:** Under normal conditions, after the initial change, the oil should be changed after every 2500 hours of operation or every six months, whichever occurs first.

## ANNUALLY

**CAUTION**



To avoid electrical shock or contact with moving parts, make sure all switches are in the "OFF" position and that the main power supply is disconnected. Some freezers have more than one disconnect switch.

1. Contact your Electro Freeze Distributor to have your gear reducer oil changed.

**NOTE:** Under normal conditions, after the initial change, the oil should be changed after every 5000 hours of operation or every year, whichever occurs first.

2. Contact your Electro Freeze Distributor for service to replace drive belts and lubricate the fan motors as needed.

3. Contact your Electro Freeze Distributor to clean the inside of the freezer, including base, side panels, condenser, etc.

4. Contact your Electro Freeze Distributor to check water-cooled condenser and flush clean to remove scale and deposits if necessary.



# 11 ROUTINE MAINTENANCE

## WINTER STORAGE

To protect the unit during seasonal shutdown, it is important to store the freezer properly. Use the following procedures:

1. Disconnect all power to the freezer.
2. Disassemble and wash all parts that come into contact with the mix using a warm, mild detergent solution. Rinse in clear water and air dry all parts thoroughly. Clean drain tube and all exterior panels.
3. Store the loose parts, such as the head assembly and beater assembly, in a safe dry place.
4. Do not lay heavy objects on the plastic or rubber parts.
5. Cover the freezer and all loose parts to protect them from dust or other elements that could contaminate them while in storage. Place the freezer in a dry location.
6. If you have an air cooled freezer, have condenser fins cleaned by an authorized service technician.
7. On water-cooled freezers, disconnect the water supply. Use compressed air to blow out all remaining water in the condenser.

***Important:***

***The water valve must be opened in order to blow out the condenser. Failure to purge the freezer of water can result in severe damage to the refrigeration system. Call your Electro Freeze Distributor for service.***

8. When freezer is restarted after seasonal shutdown, remember to replace all o-rings and seals with new parts. Rubber parts can lose their elasticity and ability to seal when stored.

### **USE ONLY ORIGINAL OR AUTHORIZED REPLACEMENT PARTS WITH THIS FREEZER.**

If you have any questions on items that are not included in this schedule or problems that require service assistance, please call your local distributor or H.C. Duke & Son, LLC, *Electro Freeze*, Service Department for factory service assistance.

Phone: (309) 755-4553 or (800) 755-4545

FAX: (309) 755-9858.

E-mail: [service@electrofreeze.com](mailto:service@electrofreeze.com)

## 12 Trouble Shooting Tables

### SAFETY



THIS SAFETY ALERT SYMBOL IDENTIFIES IMPORTANT PERSONAL SAFETY MESSAGES IN THIS MANUAL. WHEN YOU SEE THIS SYMBOL, BE ALERT TO THE POSSIBILITY OF PERSONAL INJURY. DO NOT ATTEMPT TO CONTINUE UNTIL THE SAFETY PRECAUTIONS ARE THOROUGHLY UNDERSTOOD.



#### CAUTION

All maintenance adjustments must be done by an Electro Freeze distributor or authorized service technician.

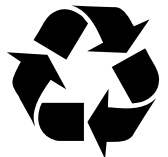


#### CAUTION

To avoid electrical shock or contact with moving parts, make sure all switches are in the “OFF” position and that the main power supply is disconnected. Some freezers have more than one disconnect switch.

#### Important:

Some refrigerants are hazardous to the Earth’s atmosphere. To protect our environment, use a refrigerant recovery/recycling unit when removing refrigerant from the system.





12

**Trouble Shooting Tables (continued)**

PROBLEM	PROBABLE CAUSE	REMEDY
---------	----------------	--------

Unit does not operate.	1. Freezer unplugged.	1. Plug in freezer.
	2. Fuse or breaker blown at main disconnect.	2. Make sure your freezer is connected to a separate circuit independent from any other electrical equipment. Have technician check fuse or breaker size and check voltage; if not within 10% of nameplate rating call power company.
	3. Beater motor out on overload.	3. Press overload reset button. Check product temperature an overrun.
	4. Off on high pressure cut-out control.	4. Refer to Troubleshooting Table – Discharge pressure too high.
	5. Off on low pressure cut-out control.	5. Contact your Electro Freeze distributor for service.
	6. Faulty selector switch.	6. Contact your Electro Freeze distributor for service.
	7. Disconnected or broken wire in electrical circuit.	7. Contact your Electro Freeze distributor for service.

Leakage of mix or water from drain tube to drip tray. 	1. Damaged beater shaft seal or installed improperly.	1. Replace cup seals on washer. Install properly.
	2. Beater shaft pitted or damaged.	2. Replace beater shaft.
	3. Beater shaft end play not set properly.	3. Contact your Electro Freeze distributor for service.

Compressor does not operate or operates improperly. 	1. Faulty head o-ring.	1. Replace o-ring.
	2. Head not properly installed.	2. Install head properly. Replace o-ring if pinched.
	3. Faulty contactor.	3. Contact your Electro Freeze Distributor for service.
	4. Disconnected or broken wire in switch.	4. Contact your Electro Freeze Distributor for service.

## 12

## Trouble Shooting Tables (continued)

PROBLEM	PROBABLE CAUSE	REMEDY
Dispensed product too soft.	1. Dirty or blocked condenser, restricted air flow.	1. Unblock condenser or have cleaned by your Electro Freeze distributor.
	2. Component failure.	2. Contact your local service company.
	3. Leak in refrigeration system resulting in little or no refrigeration.	3. Contact your local service company.
Product dispenses slowly out of dispensing head.	1. Product too cold.	1. Check product temperature. Should be 17° to 19°F (-8 to -7°C). See Troubleshooting Table - Dispensed product too hard.
	2. Dispensing speed adjustment bolt too far down.	2. Contact your Electro Freeze distributor for service.
	3. Wrong rotation on beater.	3. Have an electrician correct rotation to clockwise as viewed from the front of the freezer.
Dispensed product too hard.	1. Cylinder thermostat erratic or set too cold.	1. Contact your Electro Freeze distributor for service.
	2. Plunger switch electrically or mechanically stuck closed.	2. Contact your Electro Freeze distributor for service.
	3. Faulty time delay. (Unit runs all the time.)	3. Contact your Electro Freeze distributor for service.
	4. Low suction pressure.	4. Contact your Electro Freeze distributor for service.


## 12

## Trouble Shooting Tables (continued)

PROBLEM	PROBABLE CAUSE	REMEDY
Freezer runs continuously and product gets too cold.	1. Plunger switch rod engaged.	1. Close plunger completely.
	2. Plunger switch (side or center) out of adjustment or defective.	2. Contact your Electro Freeze distributor for service.
	4. Faulty thermostat or bulb not deep enough in well.	4. Contact your Electro Freeze distributor for service.
	5. Starter points stuck.	5. Contact your Electro Freeze distributor for service.
	6. Faulty time delay.	6. Contact your Electro Freeze distributor for service.
	7. Suction pressure too low.	7. Contact your Electro Freeze distributor for service.
	Compressor does not operate or operates improperly.	1. Trouble in compressor condensing circuit.
2. Faulty start capacitor, run capacitor or relay. (Single phase only)		2. Contact your Electro Freeze Distributor for service.
3. Faulty contactor.		3. Contact your Electro Freeze Distributor for service.
4. Disconnected or broken wire in switch or capacitor relay box.		4. Contact your Electro Freeze Distributor for service.
Compressor and beater motor operates only when dispensing.	1. Cylinder thermostat setting too warm or thermostat defective.	1. Contact your Electro Freeze distributor for service.
Compressor and beater motor do not operate when dispensing.	1. Plunger switch(es) defective or out of adjustment.	1. Contact your Electro Freeze Distributor for service.
	2. Time delay defective.	2. Contact your Electro Freeze Distributor for service.
	3. Control relay defective.	3. Contact your Electro Freeze Distributor for service.
	4. Open circuit on HPCO or LPCO.	4. Contact your Electro Freeze Distributor for service.

## 12

## Trouble Shooting Tables (continued)

PROBLEM	PROBABLE CAUSE	REMEDY
Compressor does not start – hums intermittently (cycling on overload).	1. Low line voltage.	1. Ask power company to check voltage, increase voltage to not less than 10% below data plate rating or install transformer. Have electrician check for inadequate wire size.
	2. Improperly wired.	2. Contact your Electro Freeze distributor for service.
	3. Open start capacitor or current relay.	3. Contact your Electro Freeze distributor for service.
	4. High discharge pressure.	4. Contact your Electro Freeze distributor for service.
Poor or slow product recovery.	1. Dirty or blocked condenser, restricted air flow – high ambient temperature.	1. Have condenser cleaned by your Electro Freeze distributor; lower ambient temperature.
	2. Thermostat cut-in point out of adjustment or malfunctioning.	2. Contact your Electro Freeze distributor for service.
	3. Defective condenser fan motor.	3. Contact your Electro Freeze distributor for service.
	4. Component or compressor failure.	4. Contact your Electro Freeze distributor for service.
Beater motor does not operate.  	1. Head assembly is not installed.	1. Install head assembly.
	2. Magnetic head switch defective.	2. Contact your Electro Freeze Distributor for service.
	3. Loose connection in control circuit.	3. Contact your Electro Freeze Distributor for service.
	4. Open starter coil.	4. Contact your Electro Freeze Distributor for service.
	5. Faulty capacitor assembly. (Single phase only.)	5. Contact your Electro Freeze Distributor for service.
	6. Faulty beater motor.	6. Contact your Electro Freeze Distributor for service.

12

**Trouble Shooting Tables (continued)**

PROBLEM	PROBABLE CAUSE	REMEDY
---------	----------------	--------

Unit operates long or continuously.	1. Dirty condenser.	1. Have condenser cleaned by your Electro Freeze distributor.
	2. Shortage of refrigerant.	2. Contact your Electro Freeze Distributor for service.
	3. Moisture in system.	3. Contact your Electro Freeze Distributor for service.
	4. Compressor failing.	4. Contact your Electro Freeze Distributor for service.

Discharge pressure too high.	1. Water supply hose kinked or pinched. (water cooled models)	1. Move freezer and adjust hose so it is not pinched or kinked.
	2. Water turned off or defective water regulating valve. (water cooled models)	2. Turn on water, or contact your Electro Freeze Distributor for service.
	3. Restricted water cooled condenser. (water cooled models)	3. Contact your Electro Freeze Distributor for service.
	4. Dirty air condenser. (air cooled models)	4. Contact your Electro Freeze Distributor for service.
	5. Unit location too warm (air cooled models)	5. Contact your Electro Freeze Distributor for service.
	6. Refrigerant overcharge.	6. Contact your Electro Freeze Distributor for service.
	7. Air or non-condensable in refrigeration system.	7. Contact your Electro Freeze Distributor for service.

Noisy compressor.	1. Tubing rattles.	1. Contact your Electro Freeze Distributor for service.
	2. Spring broken internally.	2. Contact your Electro Freeze Distributor for service.

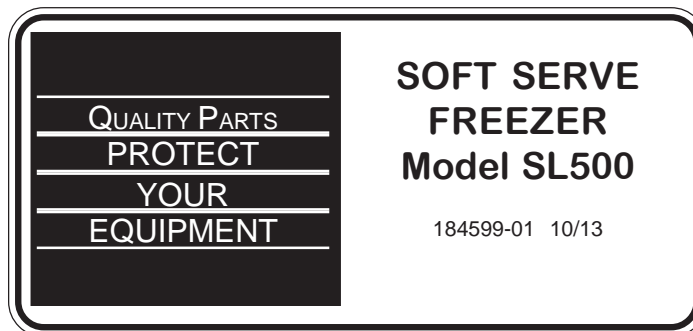






## REPLACEMENT PARTS MANUAL

with ILLUSTRATIONS



**KEEP YOUR FREEZER IN EXCELLENT CONDITION. ALWAYS CONTACT  
YOUR ELECTRO FREEZE DISTRIBUTOR FOR REPLACEMENT PARTS.**

---

## Replacement Parts Orders

You must have the serial number of your freezer when ordering parts — parts may differ with a particular serial number of the same model.

Parts are listed using terminology that best fits the function of the part. The illustrations in this section will help you to find the correct part number and description.

Place your parts order through your local authorized Electro Freeze Distributor.

Name: \_\_\_\_\_

Address: \_\_\_\_\_  
 \_\_\_\_\_

Phone: \_\_\_\_\_

If you require any further assistance, contact H. C. Duke & Son, LLC *Electro Freeze* as follows:



Phone: (309) 755-4553  
 (800) 755-4545

FAX: (309) 755-9858

E-mail: [service@electrofreeze.com](mailto:service@electrofreeze.com)

## Table of Contents

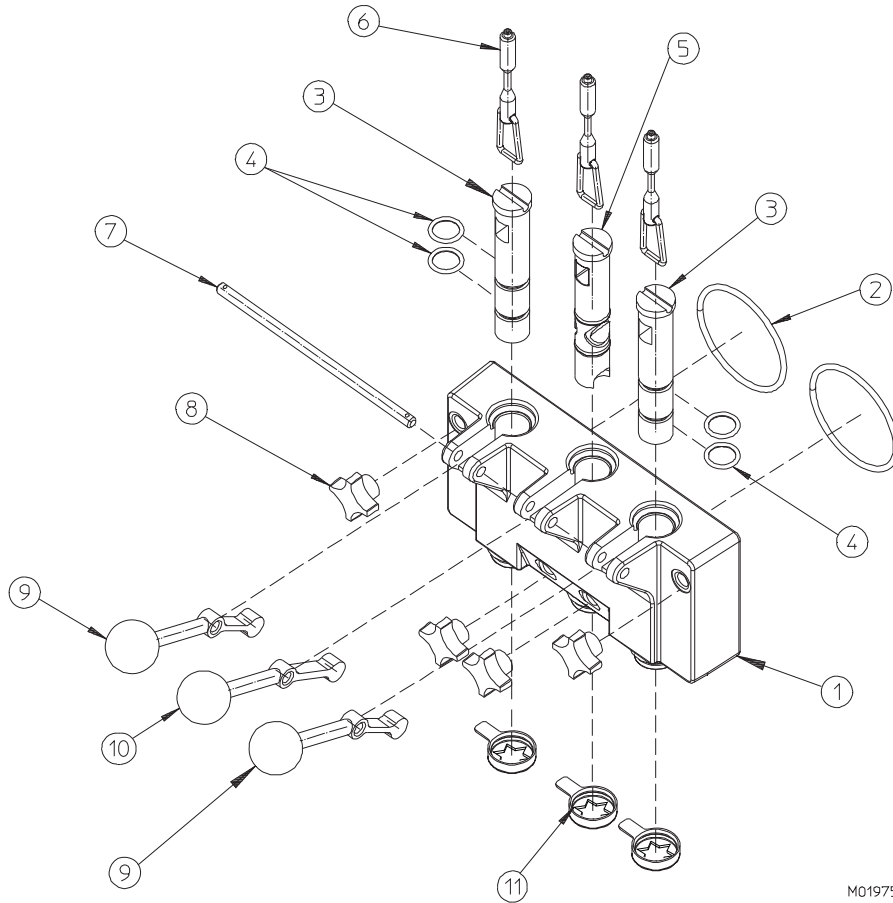
### ***PART II***

#### **ILLUSTRATIONS**

<b>Figure 1</b> ..... Head Assembly .....	<b>1</b>
<b>Figure 2</b> ..... Beater Shaft Assembly .....	<b>2</b>
<b>Figure 3</b> ..... Mix Feed Tube Assembly .....	<b>3</b>
<b>Figure 4</b> ..... Switch Box .....	<b>4</b>
<b>Figure 5</b> ..... Switch Assemblies .....	<b>6</b>
<b>Figure 6</b> ..... Gear Reducer .....	<b>7</b>
<b>Figure 7</b> ..... Panel View .....	<b>8</b>
<b>Figure 8</b> ..... Side/Rear View Air Cooled .....	<b>10</b>
<b>Figure 9</b> ..... Side/Rear View Water Cooled .....	<b>12</b>

#### **OTHER LISTS and INFORMATION**

<b>Accessories</b> .....	<b>14</b>
<b>O-Ring Chart</b> .....	<b>15</b>
<b>Cleaning &amp; Sanitizing Sheet</b> .....	<b>17</b>
<b>Alphabetized Parts List</b> .....	<b>19</b>



M01975-01

**Figure 1 Head Assembly**

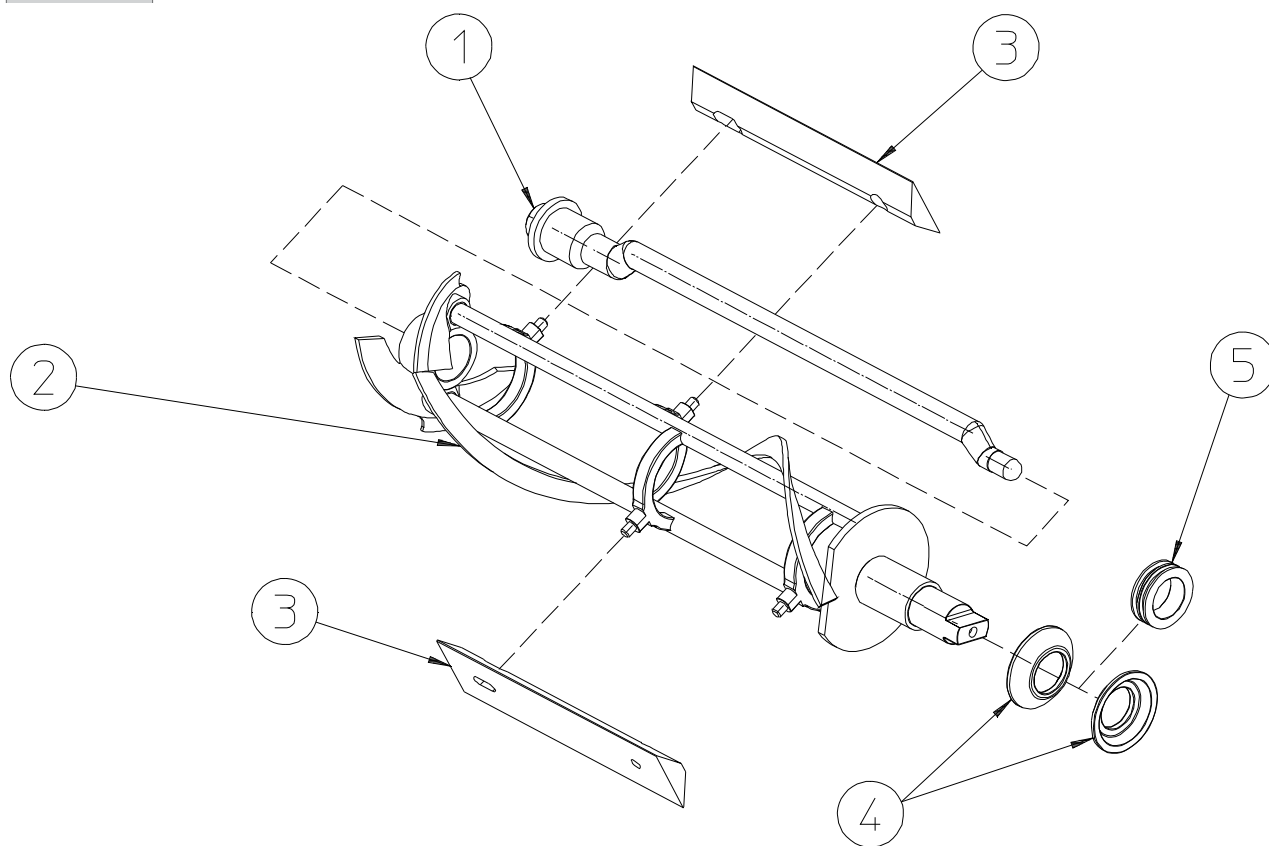
Item	Part No.	Description
*	HC121065	Head-Assy. Dispense 6 Pt ADA
1	HC116301	Head-Assy. w/actuators (Head only)
2	HC160501	O-ring (Plunger)
3	HC160583	O-ring (Head)
4	HC137174	Plunger-Side Self Dispense
5	HC138009	Plunger-Dispense Center
6	HC113426	Push Rod-Assy. Plunger Switch
7	HC160269	Pin-Handle
8	HC162625	Knob-Hand
9	HC120864	Handle-Assy Dispense ADA (Side)
	HC162629	Knob-Ball 3/8-16 THD Black
10	HC120865	Handle-Assy Dispense Center ADA
	HC162629	Knob-Ball 3/8-16 THD Black
11	HC196192	Nozzle-Serrated Six Point

\* Includes all items above except #6 and #8.

**Not Shown:**

- HC114341-05 ..... Stud-Assy. Cylinder 3-15/16"
- HC116410 ..... Switch-Dispense Head Kit

**Use only original or authorized replacement parts with this freezer.  
Use of unapproved parts will void warranty.**



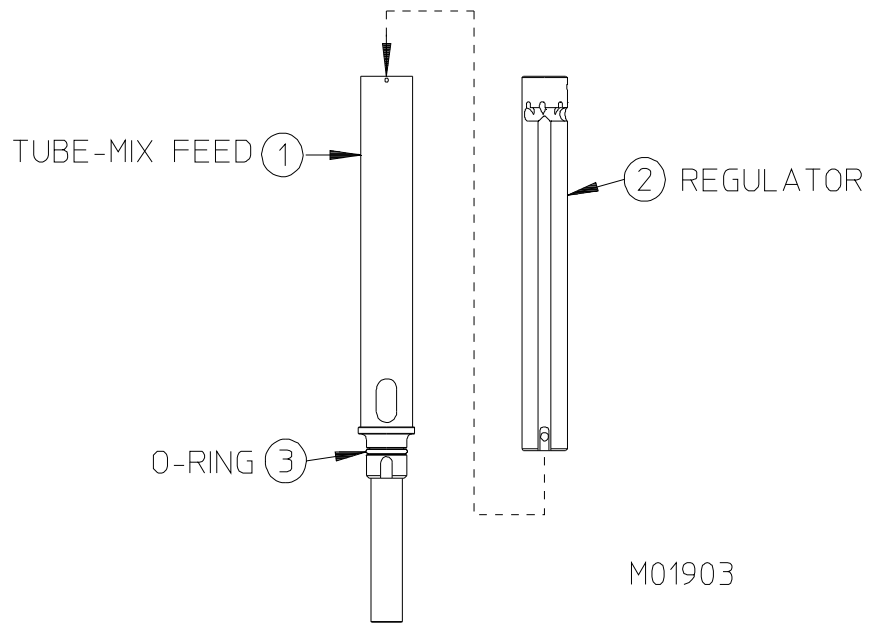
M0073

**Figure 2 Beater Shaft Assembly**

Item	Part No.	Description
1	HC139913	Bar-Breaker 16.02 in.
2	HC120866	Shaft- Assy. Beater
3	HC141009	Blade-Scraper
4*	HC160557	Seal-Beater Shaft
5*	HC137593	Washer-Double Shaft Seal

\* Can be ordered together  
 HC115525 Seal-Assy. Shaft Double

**Use only original or authorized replacement parts with this freezer.  
 Use of unapproved parts will void warranty.**



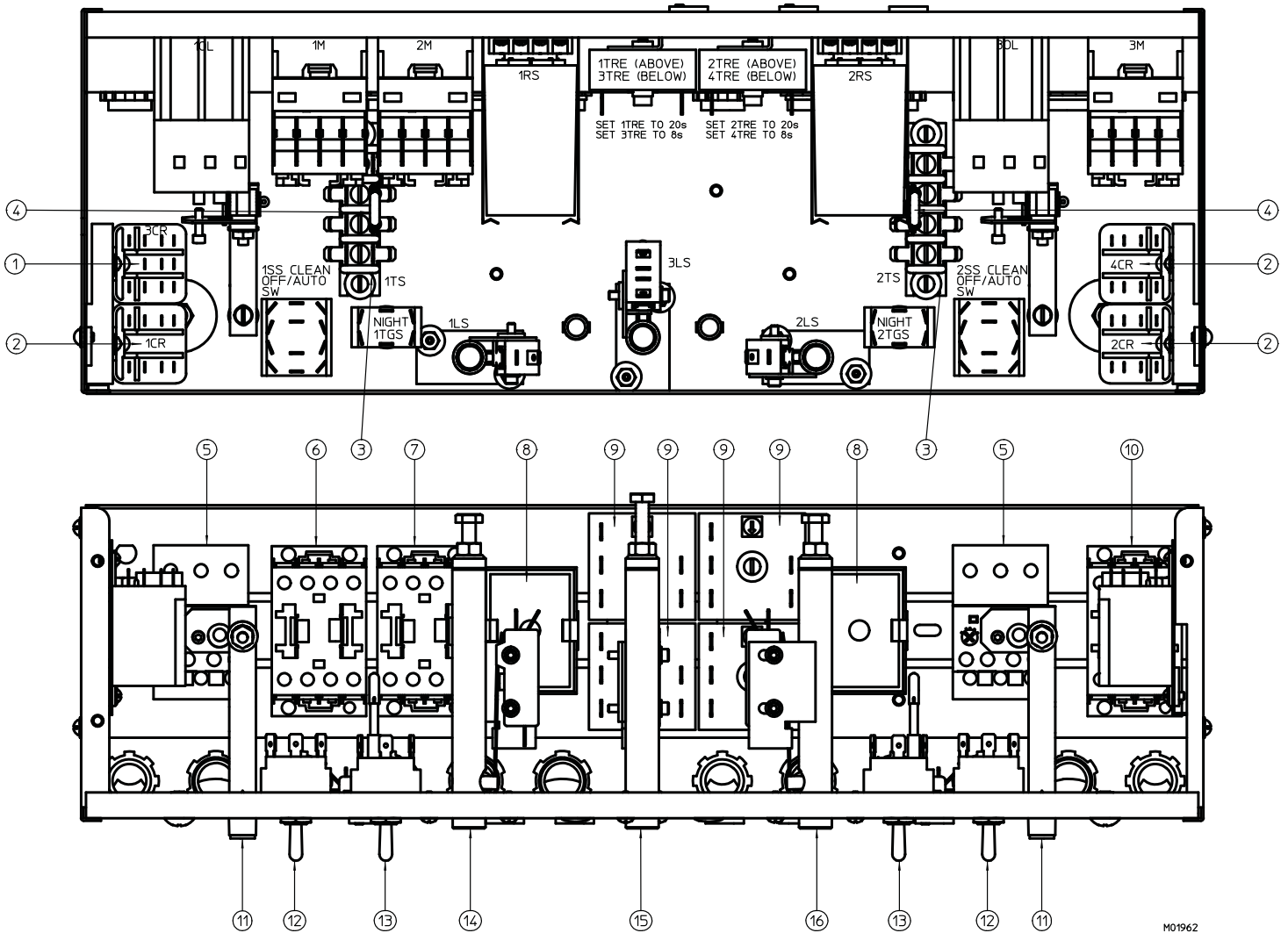
**Figure 3 Mix Feed Tube Assembly**

Item	Part No.	Description
*	HC120676	Tube- Assy Mix Feed Self Priming Complete
1	HC120672	Tube-Assy. Mix Feed Self Priming
2	HC137558	Regulator-Mix Feed
3	HC160607	O-ring (Mix Feed Tube)

\* Includes all items above.

**Use only original or authorized replacement parts with this freezer.  
Use of unapproved parts will void warranty.**

Figure 4 Switch Box (Sheet 1 of 2)



M01962

Use only original or authorized replacement parts with this freezer.  
Use of unapproved parts will void warranty.

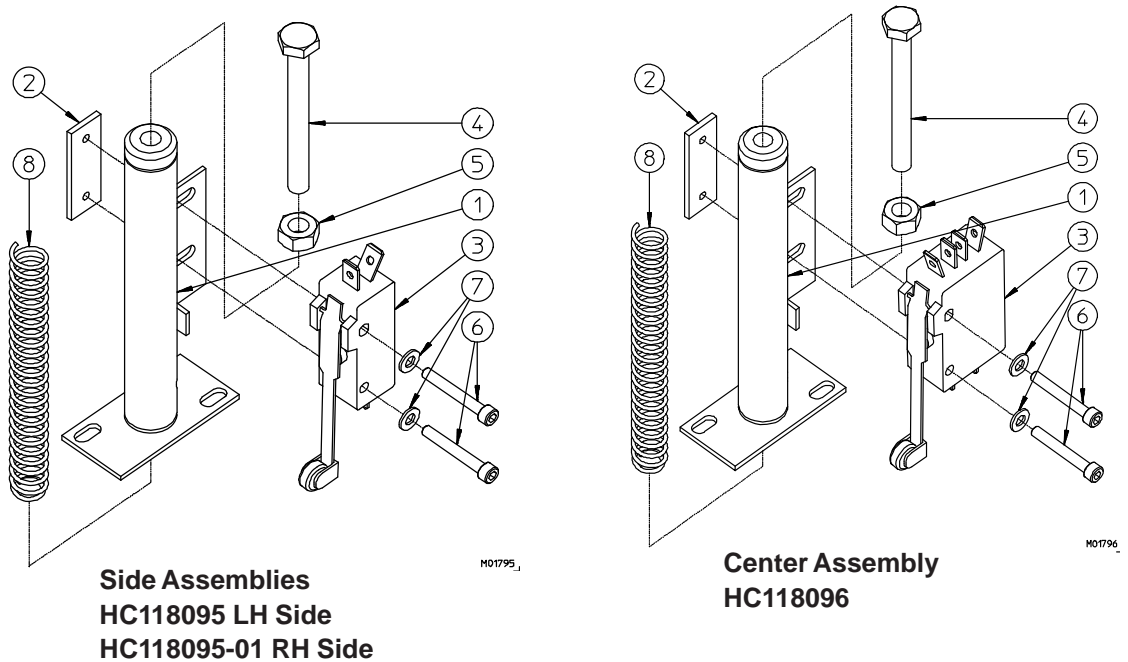
## Figure 4 Switch Box (Sheet 2 of 2)

Item	Part No.	Description
1	HC150380	Relay-Flange Base w/cover 3PDT
2	HC150381	Relay-Flange Base w/cover
3	HC150795	Strip-Terminal
4	HC116188	MOV-Assy.
5	HC121113	Relay-Assy. Overload RF38 6.3-10A
		HC150069 ..... Relay-Overload T1 6.3-10A
		HC121077 ..... Lever-Assy. Reset RF38
		HC121090 ..... Lever-Assy. Reset RF38 Long
6	HC150083	Contactora-230V BF25 (Beater Motor)
6A	HC150082	Coil-Contactora 230V BF25 (Replacement) (Not Shown)
7	HC150083	Contactora-230V BF25 (Compressor)
7A	HC150082	Coil-Contactora 230V BF25 (Replacement) (Not Shown)
8	HC150202	Indicator-Mix Level
8A	HC150540	Light-Indicator 230V (Not Shown)
8B	HC150119	Socket-Octal Terminal (Not Shown)
8C	HC150120	Clip-Retainer (Set of 2) (Not Shown)
9	HC150252-01	Timer-.5-45 Delay on Break 230v
10	HC150083	Contactora-230V BF25 (Compressor/Hopper)
10A	HC150082	Coil-Contactora 230V BF25 (Replacement) (Not Shown)
11	HC120362	Lever-Reset & Button C23 includes
		HC159036 ... Button-Reset
12	HC150436	Switch-Toggle 4PDT Center OFF (AUTO/OFF/CLEAN)
13	HC150461	Switch-Toggle DPDT (DAY/NIGHT)
14	HC118095	Switch-Assy. Plunger Side LH (See Figure 5)
15	HC118096	Switch-Assy. Plunger Center (See Figure 5)
16	HC118095-01	Switch-Assy. Plunger Side RH (See Figure 5)

LH is left side when facing front of freezer.  
RH is right side when facing front of freezer.

**Use only original or authorized replacement parts with this freezer.  
Use of unapproved parts will void warranty.**

## Figure 5 Switch Assemblies



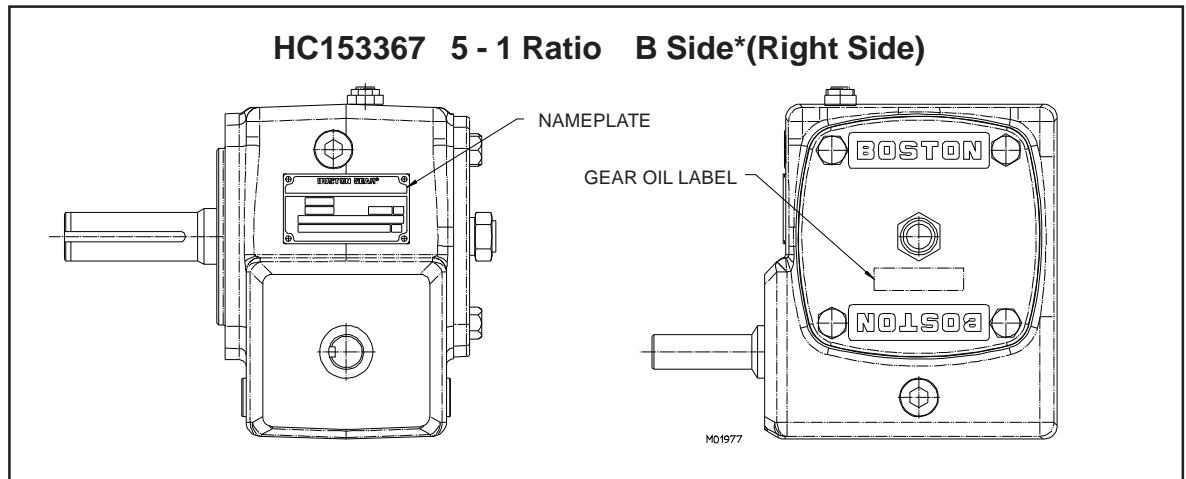
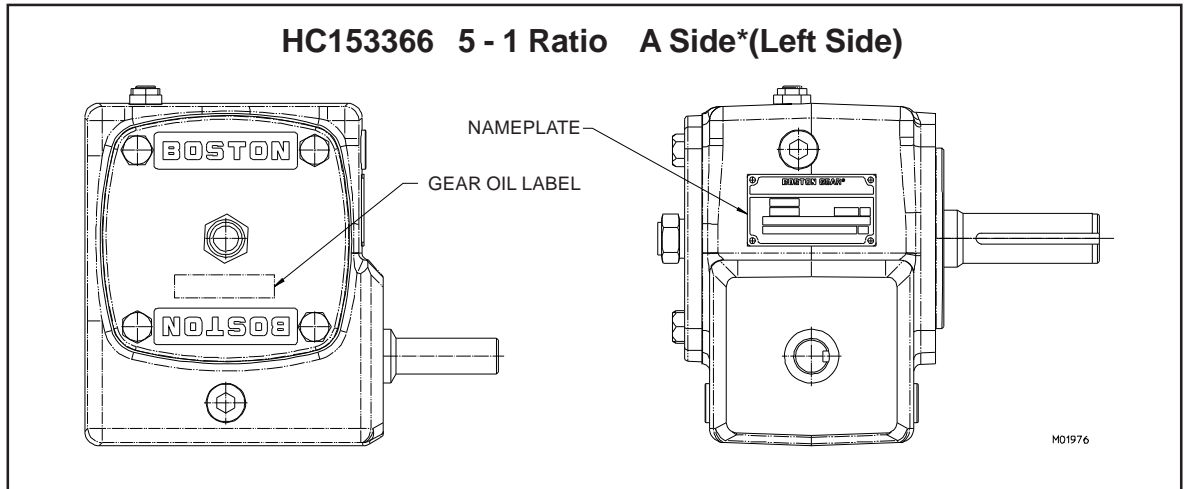
Item	Part No.	Description
	HC118095*	Switch-Assy. Plunger Side LH (Complete)
	HC118095-01*	Switch-Assy. Plunger Side RH (Complete)
	HC118096	Switch-Assy. Plunger Center (Complete)
1	HC114174	Guide-Assy. Push Rod
2	HC140701	Plate-Switch
3	HC150477	Switch-Roller Actuator SPDT (Side)
or	HC150478	Switch-Roller Actuator DPDT (Center)
4	HC159912	Screw-HXHM 1/4-20 x 2-1/4 ZN
5	HC160104	Nut-HEX 1/4-20 ZN
6	HC160381	Screw-SKHC #6-32 x 1 BKOX
7	HC160393	Washer-Flat #6 Brass
8	HC162323	Spring-Compression MW ZN

LH is left side when facing front of freezer.  
 RH is right side when facing front of freezer.

**Use only original or authorized replacement parts with this freezer.  
 Use of unapproved parts will void warranty.**



**Figure 6 Gear Reducer**



HC111780 ..... Coupling-Assy. 7/8" Drive ..... 1 ea. req.

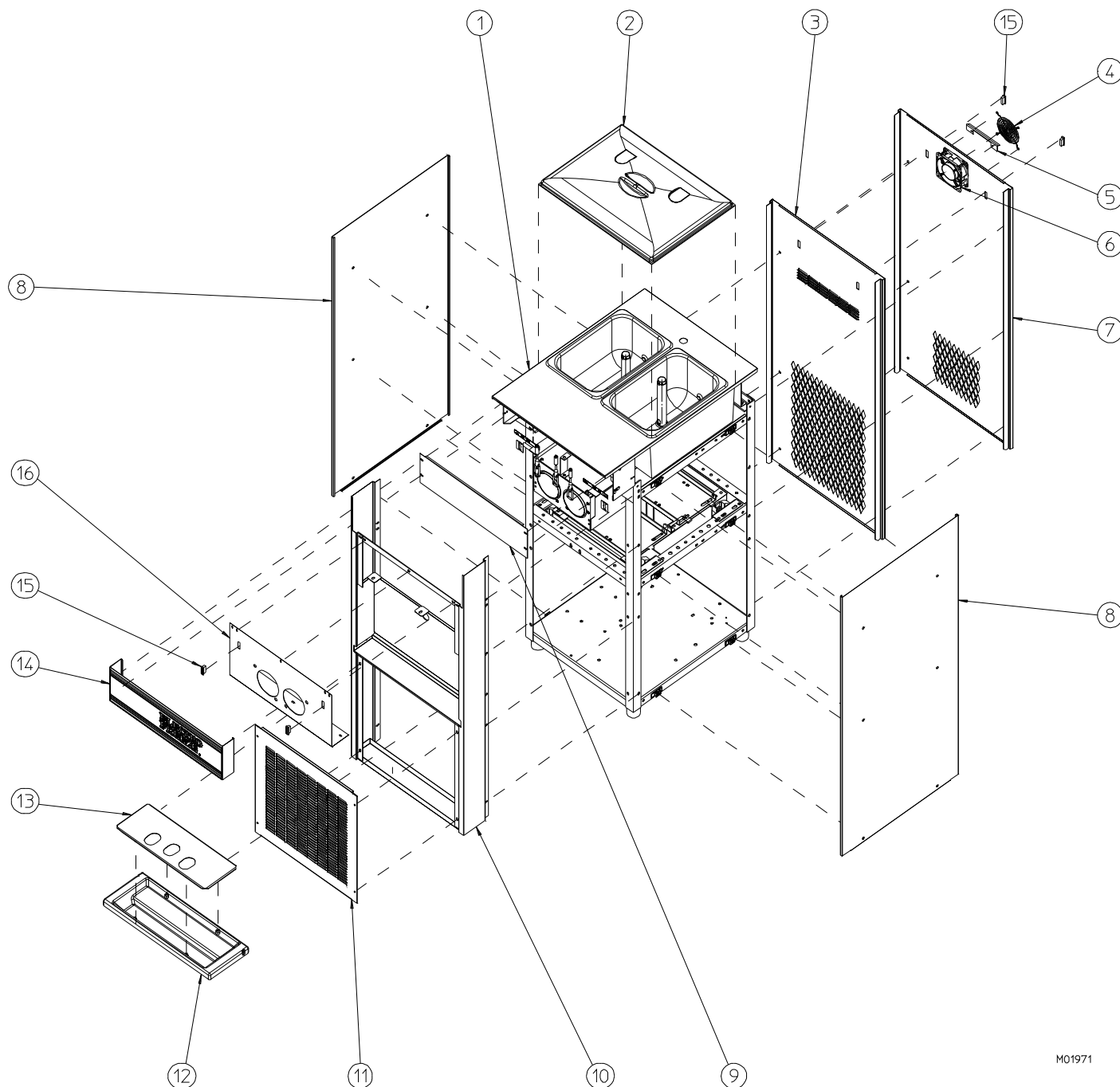
HC158047 ..... Oil-Special Gear Lube Kluber\*\*

\* A is left side when facing front of freezer.  
 B is right side when facing front of freezer.

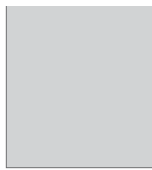
**\*\*Note:** To order oil always verify type of oil from the tag located on the gear reducer. Improper oil usage will cause failure and void of warranty.

**Use only original or authorized replacement parts with this freezer.  
 Use of unapproved parts will void warranty.**

# Figure 7 Panel View



M01971



**Use only original or authorized replacement parts with this freezer.  
Use of unapproved parts will void warranty.**

## Figure 7 Panel View

Item	Part No.	Description
1	HC120773	Panel-Assy. Hopper and Top
2	HC196111	Cover-Hopper
3	HC120781	Panel-Assy. Rear A/C (Air Cooled)
4	HC151095	Guard-Finger (Water Cooled)
5	HC138221	Cap-Drip Fan Port (Water Cooled)
6	HC151094	Fan-Axial 19W (Water Cooled)
7	HC120835	Panel-Assy Rear W/C (Water Cooled)
8	HC140940	Panel-Side
9	HC120780	Cover-Assy. Electrical Box
10	HC120776	Panel-Assy. Front
10A	HC199016	Grommet-Rubber 5/8 ID (Not shown)
11	HC140941	Panel-Front Louvered
12	HC196270	Tray-Drip 22 in Black
13	HC120778	Insert-Assy. Drip Tray
14	HC120855-01	Trimstrip-Assy. SST 22 in. (Decal sold separately)
14A	HC165188-08	Decal-Trimstrip EF Logo 22 in.
or	HC120855-02	Trimstrip-Assy EF Decal 22 in. Self Serv includes trimstrip and HC164033-03 ..... Decal-Trimstrip Self-Serv 22 in. HC165188-08 ..... Decal-Trimstrip EF Logo 22 in.
15	HC150540	Light-Indicator 230v
16	HC140942	Panel-Dispense

**Not Shown:**

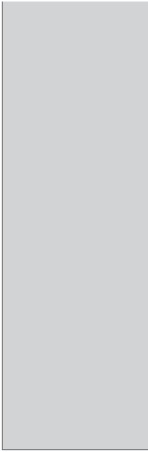
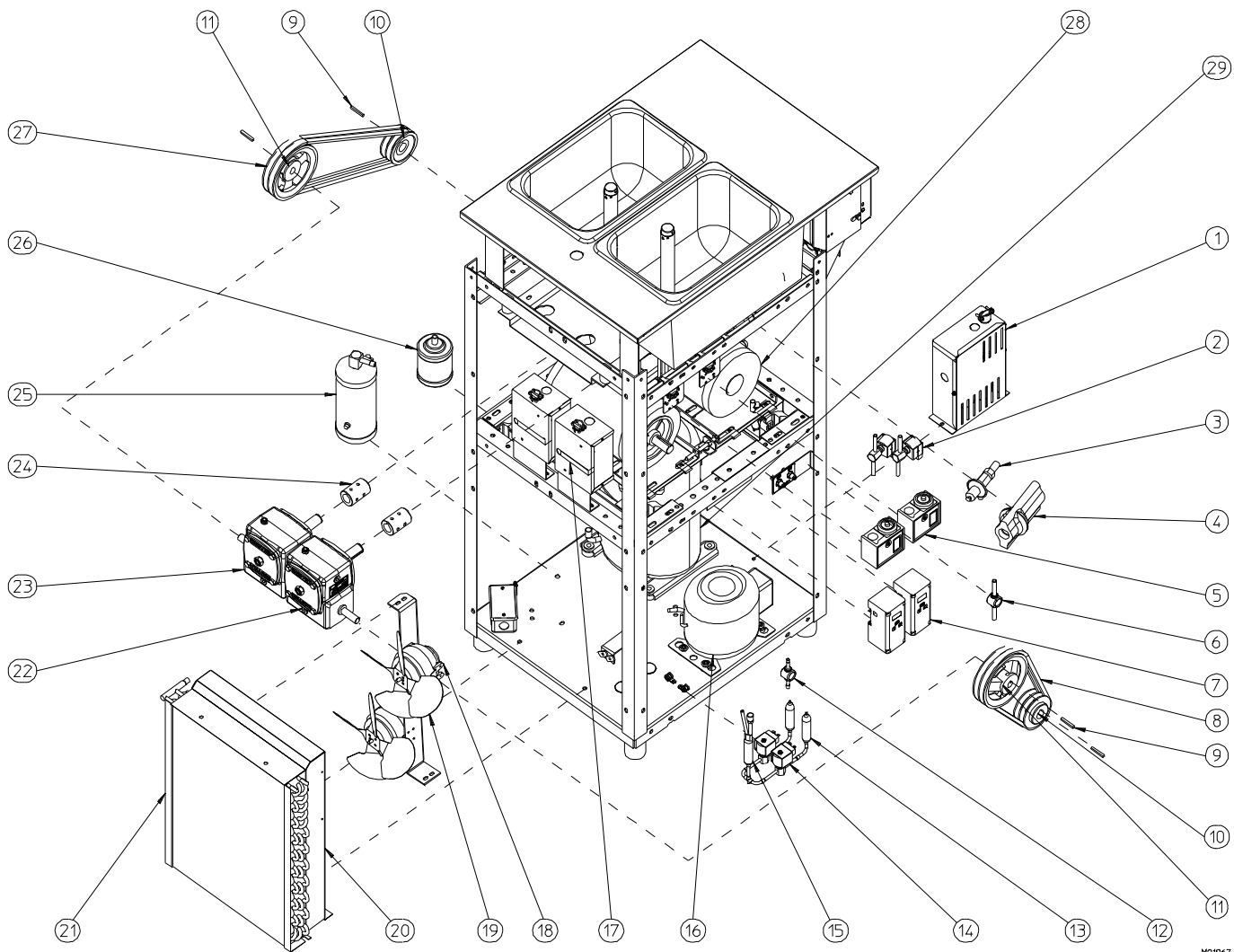
HC162105	Caster-1-1/4 St. PT w/Brake
HC162106	Caster-1-1/4 St. PT w/o Brake
HC150736	Nut-Lock Conduit 1-1/4 (for Casters)
HC112978	Leg-Assy. Six Inch

Hardware for Panels				
Panel	Screw	Nut-Speed	Spacer	Nut-Speed on Frame
Dispense	HC160076	HC159132	n/a	n/a
Front	HC160076	HC159132	n/a	HC159067
Rear	HC160048	HC160117	n/a	n/a
Side	HC159219	HC160114	HC138456	n/a
Trimstrip	HC160076	n/a	n/a	n/a
n/a – Not Applicable				

Panel Decals & Labels	
Part No.	Description
HC164034	Beater Installation
HC165025-02	Beater Warning Black
HC165025-01	Beater Warning Twist
HC165234	Cleaning Instruction
HC165093	Clear Overlay
HC163492	ON/OFF/ON
HC164004-03	Operating Instructions
HC165126	Panel Removal
HC165188-08	Trimstrip EF Logo 22"
HC164199	Trimstrip LH
HC164200	Trimstrip RH
HC169053	Ventilation 6" RR

**Use only original or authorized replacement parts with this freezer.  
Use of unapproved parts will void warranty.**

# Figure 8 Side/Rear View Air Cooled



**Use only original or authorized replacement parts with this freezer.  
Use of unapproved parts will void warranty.**

## Figure 8 Side/Rear View Air Cooled

Item	Part No.	Description
1	-----	Box-Assy. Cap (Compressor) (1 Phase Only) HC151436 ..... Capacitor-Start HC151463 ..... Capacitor-Run HC151462 ..... Relay-Comp.Start
2	HC155395	Valve-Solenoid Body 3/8 ODM (Cylinder)
2A	HC151477	Coil-Solenoid 208-240v MKC-1TS
3	HC155490	Valve-Automatic Expansion (Cylinder)
4	HC165531	Insulator-Expansion Valve
5	HC161210	Thermostat-1.5 Diff. (Hopper) (B-Side)
6	HC155059	Glass-Sight
7	HC120829	Control-Assy. Elec Temp includes control with HC161211-01 ... Probe-Sensor HC150920 ..... Jumper-2 Circuit
8	HC153160	Belt-V (A Side)
9	HC153322	Key-Drive 3/16 xs x 1-1/2
10	HC153626	Sheave-7/8 Bore 3.25 OD (Driver) includes sheave and HC160495 ..... Screw-SK Set
11	HC153621	Sheave-5/8 Bore 5.50 OD (Driven) includes sheave and HC160033 ..... Screw-SK Set
12	HC155459	Glass-Sight
13	HC155642	Tube-Capillary w/ strainer
14	HC155394	Valve-Solenoid Body 1/4 ODM (Hopper)
14A	HC151477	Coil-Solenoid 208-240v MKC-1TS
15	HC155498	Drier-Filter w/ Access
16	HC120927	Kit-HopperCompressor includes compressor and HC155498 ..... Drier-Filter w/access
17	----	Box-Assy. Capacitor (Beater Motor) (1 Phase Only) HC119912 ..... Cap.-Assy w/Bleed HC150318 ..... Capacitor-Run
18	HC151080-01	Motor-Fan 35w Enclosed 230/1/60
19	HC159017	Blade-Fan 10 in 36 Deg.
20	HC120788	Shroud-Assy. Condenser
21	HC155141	Condenser-Air
22	HC153366	Reducer-Gear LH 5/1 (A side)
23	HC153367	Reducer-Gear RH 5/1 (B side)

Item	Part No.	Description
24	HC111780	Coupling-Assy. 7/8 Drive
25	HC155071	Receiver-3 lb. 3/8 ID Sweat w/o valve
26	HC155054	Drier-Filter 16 cu. in.
27	HC153167	Belt-V (B Side)
28	HC151052	Motor (Franklin Electric)-2HP 208-230/415-3-50/60 (Beater)
or	HC120073	Kit-Motor(Emerson) & Cap 2HP 208-230V(1ph) includes motor and HC119912 .... Cap-Assy. w/ Bleed Resistor HC150318 .... Capacitor-Run28
or	HC119816	Kit-Motor(Franklin Electric) & Cap 208-230V(1ph) HC150294 .... Cap-Assy. HC150244 .... Capacitor-Run
29	HC119541	Compressor-Assy. (3 ph) includes compressor and HC155054 ..... Drier-Filter HC151478 ..... Grommet-C.Mtg. HC151478 ..... Sleeve-C.Mtg. HC155419 ..... Valve-Access HC155649 ..... Valve-Core
or	HC119540	Compressor-Assy. (1 ph) includes compressor and HC151436 ..... Capacitor-Start HC151463 ..... Capacitor-Run HC155054 ..... Drier-Filter HC151478 ..... Grommet-C.Mtg. HC151462 ..... Relay-C.Start HC151478 ..... Sleeve-C.Mtg. HC155419 ..... Valve-Access HC155649 ..... Valve-Core

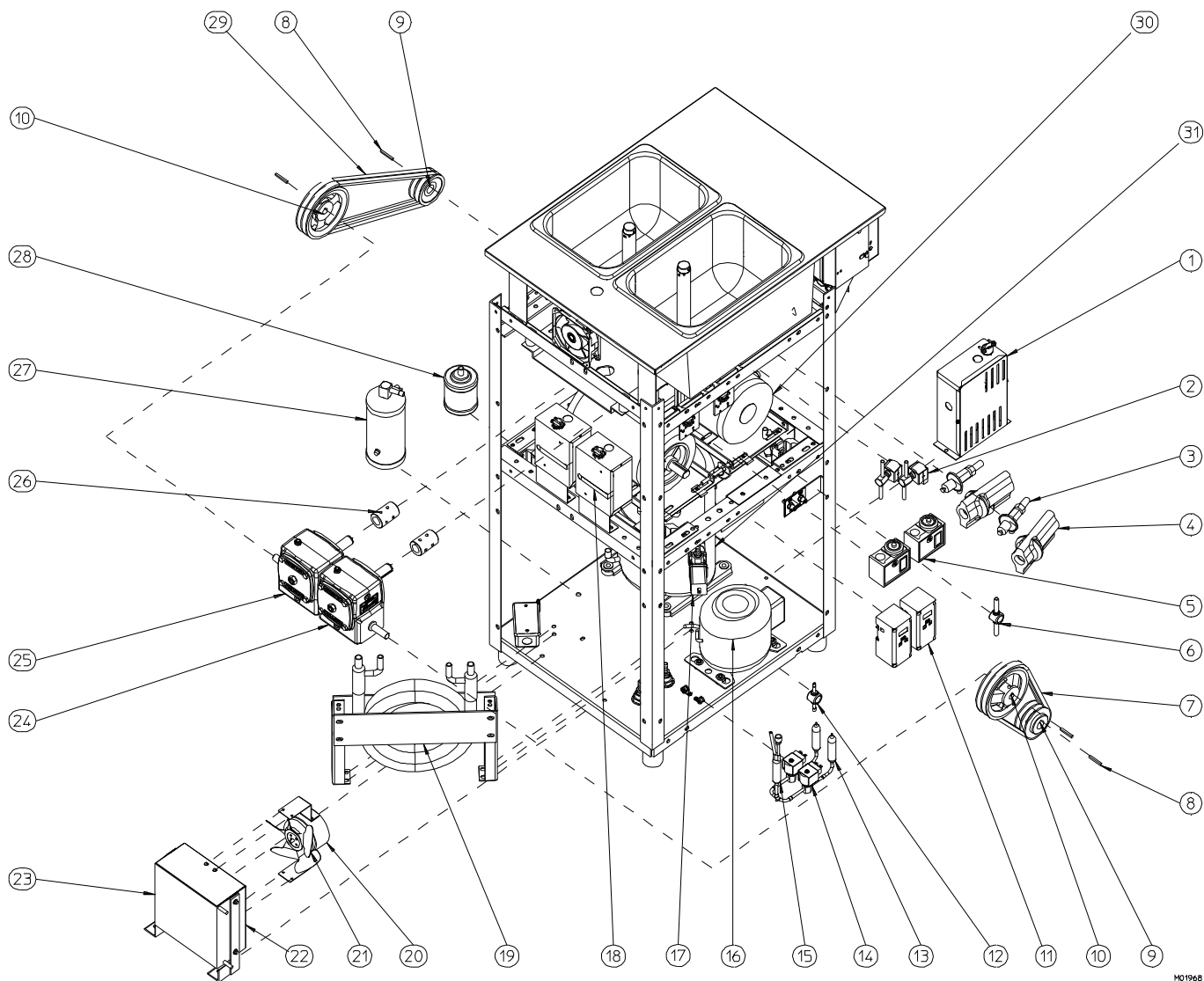
**Not Shown:**

HC115467-01	... Cylinder-Assy.Complete
HC155704	..... Cut Out-High Pressure (Hopper)
HC155450	..... Cut Out-High Pressure 450 PSI
HC155701	..... Cut Out-Low Pressure
HC115004	..... Tube-Assy. Drain 14-1/4
HC155497	..... Valve-Access 3/16" x 1/4 & 3/8 Step
HC155487	..... Valve-Check 5/8 OD Sweat

A is left side when facing front of freezer.  
B is right side when facing front of freezer.

**Use only original or authorized replacement parts with this freezer.  
Use of unapproved parts will void warranty.**

# Figure 9 Side/Rear View Water Cooled



**Use only original or authorized replacement parts with this freezer.  
Use of unapproved parts will void warranty.**

## Figure 9 Side/Rear View Water Cooled

Item	Part No.	Description
1	-----	Box-Assy Capacitor (1ph)(Compressor) HC151436 ... Capacitor-Start HC151463 ... Capacitor-Run HC151462 ... Relay-Comp. Start
2	HC155395	Valve-Solenoid Body 3/8 ODM (Cylinder)
2A	HC151477	Coil-Solenoid 208-240v MKC-1TS
3	HC155490	Valve-Automatic Expansion (Cylinder)
4	HC165531	Insulator-Expansion Valve
5	HC161210	Thermostat-1.5 Diff. (Hopper) (B-Side)
6	HC155059	Glass-Sight
7	HC153160	Belt-V (A Side)
8	HC153322	Key-Drive 3/16 xs x 1-12
9	HC153626	Sheave-7/8 Bore 3.25 OD (Driver) HC160495 ... Screw-SK Set
10	HC153621	Sheave-5/8 Bore 5.50 OD (Driven) includes HC160033 ... Screw-SK Set
11	HC120829	Control-Assy. Elec Temp includes control with HC161211-01 ... Probe-Sensor HC150920 ..... Jumper-2 Circuit
12	HC155459	Glass-Sight
13	HC155642	Tube-Capillary w/ Strainer
14	HC155394	Valve-Solenoid Body 1/4 ODM (Hopper)
14A	HC151477	Coil-Solenoid 208-240v MKC-1TS
15	HC155498	Drier-Filter w/Access
16	HC120927	Kit-HopperCompressor includes compressor and HC155498 ... Drier-Filter w/access
17	HC113769	Valve-Assy. Water HC155410 ... Valve-Water
17A	HC155444	Kit-Water Valve Repair
18	--	Box-Assy. Capacitor (1 ph) (Beater Motor) HC119912 .... Cap-Assy. w/Bleed HC150318 ... Capacitor-Run
19	HC155029	Condenser-Water
20	HC151017	Motor-Fan 5 Watt 230V
21	HC159032	Blade-Fan 6" 20°
22	HC120151	Shroud-Assy. Condenser
23	HC155139	Condenser- Air 8x8
24	HC153366	Reducer-Gear LH 5/1 (A side)

Item	Part No.	Description
25	HC153367	Reducer-Gear RH 5/1 (B side)
26	HC111780	Coupling-Assy. 7/8 Drive
27	HC155071	Receiver-3 lb. 3/8 ID Sweat w/o valve
28	HC155054	Drier-Filter 16 cu. in.
29	HC153167	Belt-V (B Side)
30	HC151052	Motor (Franklin Electric)-2HP 208-230/415-3-50/60 (Beater)
or	HC120073	Kit-Motor(Emerson) & Cap 2HP 208-230V(1ph) includes motor and HC119912 .... Cap-Assy. w/ Bleed Resistor HC150318 ... Capacitor-Run28
or	HC119816	Kit-Motor(Franklin Electric) & Cap 208-230V(1ph) HC150294 .... Cap-Assy. HC150244 .... Capacitor-Run
31	HC119541	Compressor-Assy. (3 ph) includes compressor and HC155054 ... Drier-Filter HC151478 ... Grommet-C.Mtg. HC151478 ... Sleeve-C.Mtg. HC155419 ... Valve-Access HC155649 ... Valve-Core
or	HC119540	Compressor-Assy. (1 ph) includes compressor and HC151436 ... Capacitor-Start HC151463 ... Capacitor-Run HC155054 ... Drier-Filter HC151478 ... Grommet-C.Mtg. HC151462 ... Relay-C.Start HC151478 ... Sleeve-C.Mtg. HC155419 ... Valve-Access HC155649 ... Valve-Core

**Not Shown:**

- HC115467-01 .. Cylinder-Assy.Complete
- HC155704 ..... Cut Out-High Pressure (Hopper)
- HC155702 ..... Cut Out-High Pressure 375 PSI
- HC155701 ..... Cut Out-Low Pressure

**Use only original or authorized replacement parts with this freezer.  
Use of unapproved parts will void warranty.**



## Accessories

Part No.	Description
HC196103 .....	Bottle-Wash 500 ml
HC158009 .....	Brush-4 in. w/o handle (Handle p/n HC158012)
HC158003 .....	Brush-7/16 & 1-1/8 Double End
HC158077 .....	Brush-9/16 in w/36 in. handle
HC162105 .....	Caster-1-1/4 ST PT w/brake
HC162106 .....	Caster-1-1/4 ST PT w/o brake
HC184233 .....	Chart-O-ring EF Gravity SS (Laminated)
HC120858 .....	Cover-Assy. Control Switch 22 in. Open
HC196111 .....	Cover-Hopper
HC158012 .....	Handle-Brush Fiberglass (Brush p/n HC158009)
HC115536 .....	Kit-O-ring
HC158054A .....	Lubricant-Lubri-Film Plus 4 oz. tube
HC158000A .....	Lubricant-Petro-Gel 4 oz. tube
HC112978 .....	Leg-Assy. Six inch (Optional)
HC196185 .....	Nozzle-Serrated
HC150736 .....	Nut-Lock Conduit 1-1/4 (Casters)
HC158013 .....	Sanitizer-Stera Sheen (Sample)
HC158014 .....	Sanitizer-Stera Sheen (Per case/4 jars)
HC158014A .....	Sanitizer-Stera Sheen (Per 4 lb. jar)
HC158049 .....	Scale-Overrun
HC169374 .....	Tool-O-ring Removal
HC196270 .....	Tray-Drip 22 in. Black
HC184778-01 .....	DVD-Training

**Use only original or authorized replacement parts with this freezer.  
Use of unapproved parts will void warranty.**

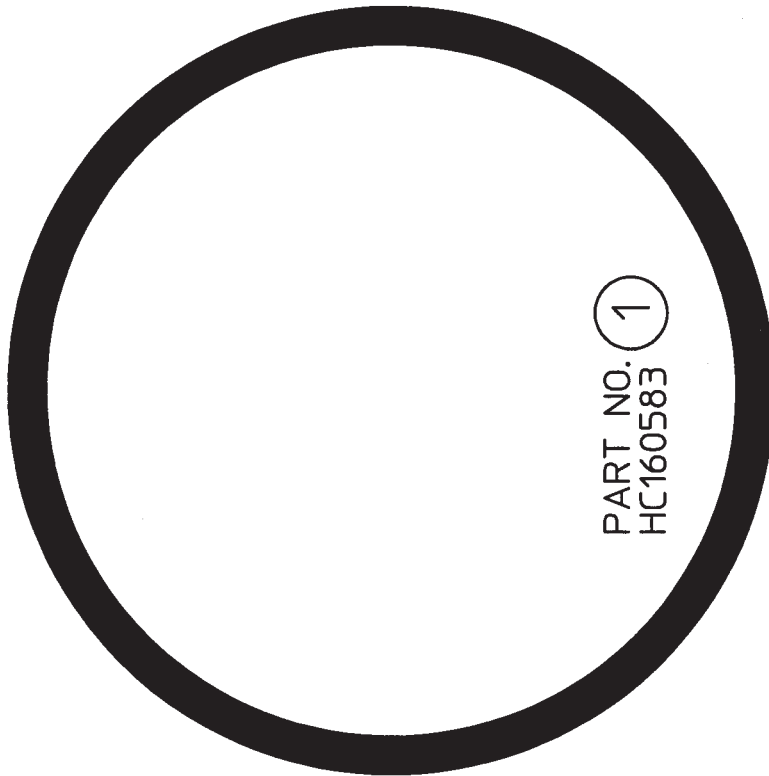


HC184233

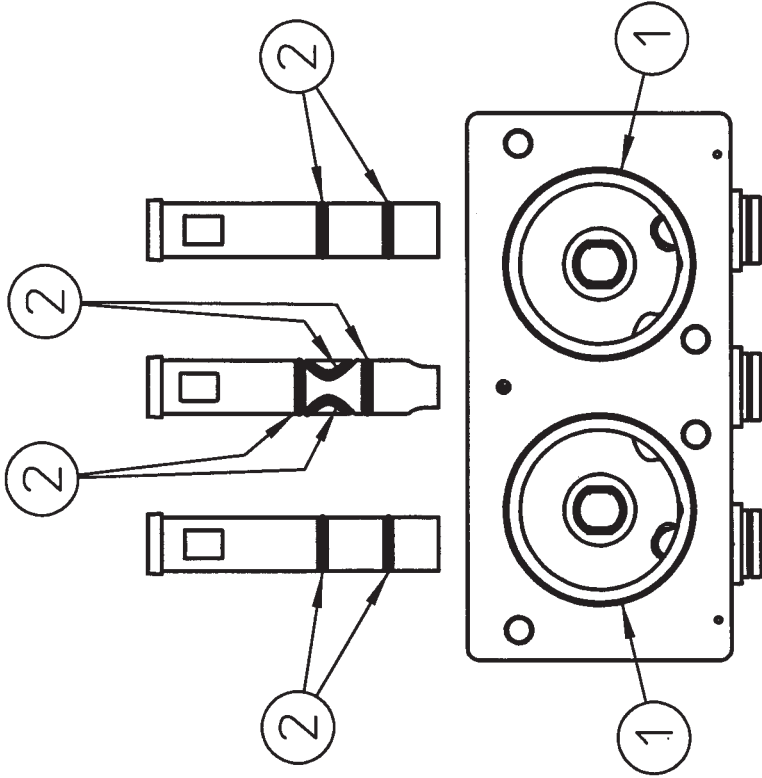
# GRAVITY SOFT SERVE DISPENSING HEAD

REV 01

ELECTRO FREEZE Soft Serve Model SL500



PART NO. 2  
HC160501



BACKSIDE  
OF  
DISPENSE HEAD

# O-RING CHART

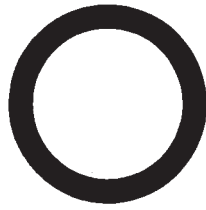
PH. NO. 309-755-4553

H.C. DUKE & SON, INC.

HC184233

# MIX FEED REGULATOR

REV 01



PART NO.  
HC160607



1

# O-RING CHART

PH. NO. 309-755-4553

H.C. DUKE & SON, INC.

# Alphabetized Parts List for Model SL500

*Important: All parts shown are for standard models designed for 230V/1PH/60HZ or 203-230V/3PH/60HZ.*

PART DESCRIPTION	PART NUMBER	QTY	SERIAL NUMBER (FROM - TO)	
Adaptor-Overload Din Rail T1 (Plunger Assy.) .....	HC150063 .....	2 .....	D2P-908	-
Adaptor-Reset Threaded T1 (Switch Assy.) .....	HC150064 .....	2 .....	D2P-908	-
Bar-Breaker 16.02 in. ....	HC139913 .....	2 .....	D2P-908	-
Belt-V (A Side) .....	HC153160 .....	2 .....	D2P-908	-
Belt-V (B Side) .....	HC153167 .....	2 .....	D2P-908	-
Blade-Fan 10" 36° (Air Cooled) .....	HC159017 .....	2 .....	D2P-908	-
Blade-Fan 6" 20° (Water Cooled) .....	HC159032 .....	1 .....	D2P-908	-
Blade-Scraper .....	HC141009 .....	4 .....	D2P-908	-
Bottle-Wash 500 ml .....	HC196103 .....	1 .....	D2P-908	-
Brush-4 in. w/o handle (Handle p/n HC158012) .....	HC158009 .....	1 .....	D2P-908	-
Brush-7/16 & 1-1/8 Double End .....	HC158003 .....	1 .....	D2P-908	-
Brush-9/16 in w/36 in. handle .....	HC158077 .....	1 .....	D2P-908	-
Capacitor-Assy. w/resistor (Start) (Beater Motor) ..	HC119912 .....	1 .....	D2P-908	-
Capacitor-Run (Beater Motor) .....	HC150138 .....	1 .....	D2P-908	-
Capacitor-Run (Compressor) .....	HC151463 .....	1 .....	D2P-908	-
Capacitor-Start (Compressor) .....	HC151436 .....	1 .....	D2P-908	-
Cap-Drip Fan Port (Water Cooled) .....	HC138221 .....	1 .....	D2P-908	-
Caster-1-1/4 St. PT w/Brake .....	HC162105 .....	2 .....	D2P-908	-
Caster-1-1/4 St. PT w/o Brake .....	HC162106 .....	2 .....	D2P-908	-
Chart-O-ring EF Gravity SS (Laminated) .....	HC184233 .....	1 .....	D2P-908	-
Clip-Retainer (Set of 2) .....	HC150120 .....	2 .....	D2P-908	-
Coil-AB 208-230V (Replacement) (NLA use HC150082) .....	HC150156 .....	* .....	D2P-908	- A2Q-261
Coil-Contactor 230V BF25 (Replacement) .....	HC150082 .....	* .....	A2Q-262	-
Coil-Solenoid 208-240v MKC-1TS (Cylinder and Hopper) .....	HC151477 .....	4 .....	D2Q	-
<p>* As Required  ** Items Included In O-Ring Kit No. HC115536  *** LH or RH — Left or right hand is determined as you face the front of the freezer.  WC = Water Cooled AC = Air Cooled NLA = No Longer Available NLU = No Longer Used</p>				

**Use only original or authorized replacement parts with this freezer.  
Use of unapproved parts will void warranty.**

# Alphabetized Parts List for Model SL500

*Important: All parts shown are for standard models designed for 230V/1PH/60HZ or 203-230V/3PH/60HZ.*

PART DESCRIPTION	PART NUMBER	QTY	SERIAL NUMBER (FROM – TO)
Compressor-Assy. 208-230/1/60 (1 ph) .....	HC119540 .....	1 .....	D2P-908 -
Capacitor-Run .....	HC151463 .....	1 .....	D2P-908 -
Capacitor-Start .....	HC151436 .....	1 .....	D2P-908 -
Drier-Filter 16 cu in .....	HC155054 .....	1 .....	D2P-908 -
Grommet-Compressor Mounting .....	HC151478 .....	4 .....	D2P-908 -
Relay-Compressor Start .....	HC151462 .....	1 .....	D2P-908 -
Sleeve-Compressor Mounting .....	HC151479 .....	4 .....	D2P-908 -
Valve-Access .....	HC155419 .....	1 .....	D2P-908 -
Valve-Core .....	HC155649 .....	1 .....	D2P-908 -
Compressor-Assy. 208-230/3/60 (3 ph) .....	HC119541 .....	1 .....	D2P-908 -
Drier-Filter 16 cu in .....	HC155054 .....	1 .....	D2P-908 -
Grommet-Compressor Mounting .....	HC151478 .....	4 .....	D2P-908 -
Sleeve-Compressor Mounting .....	HC151479 .....	4 .....	D2P-908 -
Valve-Access .....	HC155419 .....	1 .....	D2P-908 -
Valve-Core .....	HC155649 .....	1 .....	D2P-908 -
Compressor-Kit Hopper .....	HC120927 .....	1 .....	D2P-908 -
Drier-Filter .....	HC155498 .....	1 .....	D2P-908 -
Condenser-Air (Air Cooled) .....	HC155141 .....	1 .....	D2P-908 -
Condenser-Air 8x8 (WC Models)(R134A System) ....	HC155139 .....	1 .....	D2P-908 -
Condenser-Assy Auxiliary Compressor (Water Cooled)(R134A System) includes .....	HC120789 .....	1 .....	D2P-908 -
Blade-Fan 6 in. 20° .....	HC159032 .....	1 .....	D2P-908 -
Condenser-Air 8x8 .....	HC155139 .....	1 .....	D2P-908 -
Motor-Fan 5 Watt 230v .....	HC151017 .....	1 .....	D2P-908 -
Shroud-Assy. Condenser .....	HC120151 .....	1 .....	D2P-908 -
Condenser-Water (Water Cooled) .....	HC155029 .....	1 .....	D2P-908 -
Contacteur-IEC 23A 208-230V C (NLA use HC150083) .....	HC150155 .....	1 .....	D2P-908 - A2Q-261
Contacteur-Contacteur 230V BF25 .....	HC150083 .....	1 .....	A2Q-262 -
Control-Assy. Elec Temp .....	HC120829 .....	2 .....	D2P-908 -
Coupling-Assy. 7/8 Drive .....	HC111780 .....	2 .....	D2P-908 -
Cover-Assy. Control Switch 22 in. Open (Optional)	HC120858 .....	1 .....	D2P-908 -
<p>* As Required  ** Items Included In O-Ring Kit No. HC115536  *** LH or RH — Left or right hand is determined as you face the front of the freezer.  WC = Water Cooled AC = Air Cooled NLA = No Longer Available NLU = No Longer Used</p>			

**Use only original or authorized replacement parts with this freezer.  
Use of unapproved parts will void warranty.**

## Alphabetized Parts List for Model SL500

*Important: All parts shown are for standard models designed for 230V/1PH/60HZ or 203-230V/3PH/60HZ.*

PART DESCRIPTION	PART NUMBER	QTY	SERIAL NUMBER (FROM - TO)
Cover-Assy. Electrical Box .....	HC120780 .....	1 .....	D2P-908 -
Cover-Hopper .....	HC196111 .....	1 .....	D2P-908 -
Cut Out-High Pressure (Hopper) .....	HC155704 .....	1 .....	D2P-908 -
Cut Out-High Pressure 375 PSI (Water Cooled) ...	HC155702 .....	1 .....	D2P-908 -
Cut Out-High Pressure 450 PSI (Air Cooled) .....	HC155450 .....	1 .....	D2P-908 -
Cut Out-Low Pressure .....	HC155701 .....	1 .....	D2P-908 -
Cylinder-Assy.Complete .....	HC115467-01 .....	1 .....	D2P-908 -
Decal-Beater Installation .....	HC164034 .....	1 .....	D2P-908 -
Decal-Beater Warning .....	HC165025 .....	1 .....	D2P-908 -
Decal-Cleaning Instructions .....	HC165234 .....	1 .....	D2P-908 -
Decal-Clear Overlay .....	HC165093 .....	1 .....	D2P-908 -
Decal-Operating Instructions .....	HC164004-03 .....	1 .....	D2P-908 -
Decal-Panel Removal .....	HC165126 .....	3 .....	D2P-908 -
Decal-Trimstrip EF Logo 22 in. ....	HC165188-08 .....	1 .....	D2P-908 -
Decal-Trimstrip LH .....	HC164199 .....	1 .....	D2P-908 -
Decal-Trimstrip RH .....	HC164200 .....	1 .....	D2P-908 -
Decal-Ventilation 6" RR .....	HC169053 .....	1 .....	D2P-908 -
Drier-Filter 16 cu. in. ....	HC155054 .....	1 .....	D2P-908 -
Drier-Filter w/Access .....	HC155498 .....	1 .....	D2P-908 -
DVD-Training .....	HC184778-01 .....	1 .....	D2P-908 -
Fan-Axial 19W (Water Cooled) .....	HC151094 .....	1 .....	D2P-908 -
Glass-Sight .....	HC155059 .....	1 .....	D2P-908 -
Glass-Sight (Auxiliary) .....	HC155459 .....	1 .....	D2P-908 -
Grommet-Compressor Mounting .....	HC151478 .....	4 .....	D2P-908 -
Grommet-Rubber 5/8 ID .....	HC199016 .....	1 .....	D2P-908 -
Guard-Finger (Water Cooled) .....	HC151095 .....	1 .....	D2P-908 -
<p>* As Required  ** Items Included In O-Ring Kit No. HC115536  *** LH or RH — Left or right hand is determined as you face the front of the freezer.  WC = Water Cooled AC = Air Cooled NLA = No Longer Available NLU = No Longer Used</p>			

**Use only original or authorized replacement parts with this freezer.  
Use of unapproved parts will void warranty.**

# Alphabetized Parts List for Model SL500

*Important: All parts shown are for standard models designed for 230V/1PH/60HZ or 203-230V/3PH/60HZ.*

PART DESCRIPTION	PART NUMBER	QTY	SERIAL NUMBER (FROM – TO)
Guide-Assy. Push Rod (Switch Assy.) .....	HC114174 .....	3 .....	D2P-908 -
Handle-Assy. Dispense (Side) (Optional) .....	HC110007 .....	2 .....	D2P-908 -
Knob-Ball 3/8-16 THD Black .....	HC162629 .....	2 .....	D2P-908 -
Handle-Assy. Dispense ADA (Side) (Standard) ....	HC120864 .....	2 .....	D2P-908 -
Knob-Ball 3/8-16 THD Black .....	HC162629 .....	2 .....	D2P-908 -
Handle-Assy. Dispense ADA Center (Standard) ...	HC120865 .....	1 .....	D2P-908 -
Knob-Ball 3/8-16 THD Black .....	HC162629 .....	1 .....	D2P-908 -
Handle-Assy. Dispense Center (Optional) .....	HC114808 .....	1 .....	D2P-908 -
Knob-Ball 3/8-16 THD Black .....	HC162629 .....	1 .....	D2P-908 -
Handle-Brush Fiberglass (Brush p/n HC158009) ...	HC158012 .....	1 .....	D2P-908 -
Head-Assy. Dispense .....	HC114995 .....	1 .....	D2P-908 - L2P-4129
Head-Assy. w/actuators (Head only) .....	HC116301 .....	1 .....	D2P-908 - L2P-4129
Handle-Assy. Dispense (Side) .....	HC110007 .....	2 .....	D2P-908 - L2P-4129
Handle-Assy. Dispense Center .....	HC114808 .....	1 .....	D2P-908 - L2P-4129
Nozzle-Serrated .....	HC196185 .....	3 .....	D2P-908 - L2P-4129
O-ring (Plunger) .....	HC160501 .....	8 .....	D2P-908 - L2P-4129
O-ring (Head) .....	HC160583 .....	2 .....	D2P-908 - L2P-4129
Pin-Handle .....	HC160269 .....	1 .....	D2P-908 - L2P-4129
Plunger-Dispense, Center .....	HC138009 .....	1 .....	D2P-908 - L2P-4129
Plunger-Side Self Dispense .....	HC137174 .....	2 .....	D2P-908 - L2P-4129
Head-Assy. Dispense .....	<i>Serial No. L2P-4129 to A2Q-261</i>		
Head could be either HC114995 or HC114995-01...the only difference is the nozzle on HC114995-01 is a 6 pointed star.			
Head-Assy. Dispense 6 PT .....	HC114995-01 .....	1 .....	A2Q-262 -
Head-Assy. w/actuators (Head only) .....	HC116301 .....	1 .....	A2Q-262 -
Handle-Assy. Dispense (Side) .....	HC110007 .....	2 .....	A2Q-262 -
Handle-Assy. Dispense Center .....	HC114808 .....	1 .....	A2Q-262 -
Nozzle-Serrated Six Point .....	HC196192 .....	3 .....	A2Q-262 -
O-ring (Plunger) .....	HC160501 .....	8 .....	A2Q-262 -
O-ring (Head) .....	HC160583 .....	2 .....	A2Q-262 -
Pin-Handle .....	HC160269 .....	1 .....	A2Q-262 -
Plunger-Dispense, Center .....	HC138009 .....	1 .....	A2Q-262 -
Plunger-Side Self Dispense .....	HC137174 .....	2 .....	A2Q-262 -

\* As Required

\*\* Items Included In O-Ring Kit No. HC115536

\*\*\* LH or RH — Left or right hand is determined as you face the front of the freezer.

WC = Water Cooled AC = Air Cooled NLA = No Longer Available NLU = No Longer Used

**Use only original or authorized replacement parts with this freezer.  
Use of unapproved parts will void warranty.**

## Alphabetized Parts List for Model SL500

*Important: All parts shown are for standard models designed for 230V/1PH/60HZ or 203-230V/3PH/60HZ.*

PART DESCRIPTION	PART NUMBER	QTY	SERIAL NUMBER (FROM - TO)
Head-Assy. Dispense 6 PT ADA (Optional) .....	HC121065 .....	1 .....	A2Q-262 -
Head-Assy. w/actuators (Head only) .....	HC116301 .....	1 .....	A2Q-262 -
Handle-Assy. Dispense ADA (Side) .....	HC120864 .....	2 .....	A2Q-262 -
Handle-Assy. Dispense ADA Center .....	HC120865 .....	1 .....	A2Q-262 -
Nozzle-Serrated Six Point .....	HC196192 .....	3 .....	A2Q-262 -
O-ring (Plunger) .....	HC160501 .....	8 .....	A2Q-262 -
O-ring (Head) .....	HC160583 .....	2 .....	A2Q-262 -
Pin-Handle .....	HC160269 .....	1 .....	A2Q-262 -
Plunger-Dispense, Center .....	HC138009 .....	1 .....	A2Q-262 -
Plunger-Side Self Dispense .....	HC137174 .....	2 .....	A2Q-262 -
Indicator-Mix Level .....	HC150202 .....	2 .....	D2P-908 -
Insert-Assy. Drip Tray .....	HC120778 .....	1 .....	D2P-908 -
Insulator-Expansion Valve .....	HC165531 .....	2 .....	D2P-908 -
Jumper-2 Circuit (Elec. Temperature Control) .....	HC150920 .....	2 .....	D2P-908 -
Key-Drive 3/16 sq x 1-/12 .....	HC153322 .....	4 .....	D2P-908 -
Kit-Motor (Franklin) 208-230/415-3-50/60 (Beater) .	HC151052 .....	1 .....	D2P-908 -
Kit-Motor (Emerson) 208-230/1/60 (Beater) .....	HC120073 .....	1 .....	D2P-908 -
Kit-Motor (Franklin) 208-230/1/60 (Beater) .....	HC119816 .....	1 .....	D2P-908 -
Kit-O-ring .....	HC115536 .....	1 .....	D2P-908 -
Kit-Water Valve Repair .....	HC155444 .....	1 .....	D2P-908 -
Knob-Ball 3/8-16 THD Black .....	HC162629 .....	3 .....	D2P-908 -
Knob-Hand .....	HC162625 .....	4 .....	D2P-908 -
Knob-Timer (NLU) .....	HC162604 .....	2 .....	D2P-908 - K2P
Leg-Assy. Six inch (Optional) .....	HC112978 .....	4 .....	D2P-908 -
Lever-Reset & Button C23 .....	HC120362 .....	2 .....	D2P-908 -
Light-Indicator 230V .....	HC150540 .....	4 .....	D2P-908 -
<p>* As Required  ** Items Included In O-Ring Kit No. HC115536  *** LH or RH — Left or right hand is determined as you face the front of the freezer.  WC = Water Cooled AC = Air Cooled NLA = No Longer Available NLU = No Longer Used</p>			

**Use only original or authorized replacement parts with this freezer.  
Use of unapproved parts will void warranty.**

# Alphabetized Parts List for Model SL500

*Important: All parts shown are for standard models designed for 230V/1PH/60HZ or 203-230V/3PH/60HZ.*

PART DESCRIPTION	PART NUMBER	QTY	SERIAL NUMBER (FROM – TO)
Lubricant-Lubri-Film Plus 4 oz. tube .....	HC158054A .....	1 .....	D2P-908 -
Lubricant-Petrol Gel 4 oz. tube .....	HC158000A .....	1 .....	D2P-908 -
Motor-Beater .....	<i>Order by Freezer Serial No.</i>		
Motor-Fan 35w Enclosed 230-1-60 (Air Cooled) ....	HC151080-01 .....	2 .....	D2P-908 -
Motor-Fan 5 Watt 230v (Water Cooled) .....	HC151017 .....	1 .....	D2P-908 -
MOV-Assy. (Electric Box) .....	HC116188 .....	2 .....	D2P-908 -
Nozzle-Serrated .....	HC196185 .....	3 .....	D2P-908 - L2P-4129
Nozzle-Serrated .....	<i>Serial No. L2P-4129 to A2O-261</i>		
<i>Could be either HC196185 or HC196192 (HC196192 has 6 points)</i>			
Nozzle-Serrated Six Point .....	HC196192 .....	3 .....	A2O-262
Nut-HEX 1/4-20 ZN (Switch Assy.) .....	HC160104 .....	1 .....	D2P-908 -
Nut-Lock Conduit 1-1/4 (Casters) .....	HC150736 .....	4 .....	D2P-908 -
Nut-Speed (on frame) #10-24 .100-.125 (Front Panel) .....	HC159067 .....	* .....	D2P-908 -
Nut-Speed #10-24 .025-.064 SST (Front & Dispense Panel) .....	HC159132 .....	* .....	D2P-908 -
Nut-Speed #1/4-.20 BP&O (Side Panel) .....	HC160114 .....	* .....	D2P-908 -
Nut-Speed #1/4-.20 .064-.125 (Rear Panel) .....	HC160117 .....	* .....	D2P-908 -
Oil-Special Gear Lube (per quart) .....	*	1 .....	D2P-908 -
O-ring (Head) .....	HC160583** .....	2 .....	D2P-908 -
O-ring (Mix Feed Tube) .....	HC160607** .....	2 .....	D2P-908 -
O-ring (Plunger) .....	HC160501** .....	8 .....	D2P-908 -
Panel-Assy. Front .....	HC120776 .....	1 .....	D2P-908 -
Panel-Assy. Hopper and Top .....	HC120773 .....	1 .....	D2P-908 -
Panel-Assy. Rear A/C (Air Cooled) .....	HC120781 .....	1 .....	D2P-908 -
Panel-Assy. Rear W/C (Water Cooled) .....	HC120835 .....	1 .....	D2P-908 -
<p>* As Required  ** Items Included In O-Ring Kit No. HC115536  *** LH or RH — Left or right hand is determined as you face the front of the freezer.  WC = Water Cooled AC = Air Cooled NLA = No Longer Available NLU = No Longer Used</p>			

**Use only original or authorized replacement parts with this freezer.  
Use of unapproved parts will void warranty.**



# Alphabetized Parts List for Model SL500

*Important: All parts shown are for standard models designed for 230V/1PH/60HZ or 203-230V/3PH/60HZ.*

PART DESCRIPTION	PART NUMBER	QTY	SERIAL NUMBER (FROM - TO)
Panel-Dispense .....	HC140942 .....	1 .....	D2P-908 -
Panel-Front Louvered .....	HC140941 .....	1 .....	D2P-908 -
Panel-Service (NLU) .....	HC132942 .....	1 .....	D2P-908 - K2P
Panel-Side .....	HC140940 .....	2 .....	D2P-908 -
Pin-Handle .....	HC160269 .....	1 .....	D2P-908 -
Plate-Switch (Switch Assy.) .....	HC140701 .....	3 .....	D2P-908 -
Plunger-Dispense Center .....	HC138009 .....	1 .....	D2P-908 -
Guide-Assy. Push Rod .....	HC114174 .....	1 .....	D2P-908 -
Nut-HEX 1/4-20 ZN .....	HC160104 .....	1 .....	D2P-908 -
Screw-HXHM 1/4-20 x 2 ZN .....	HC160104 .....	1 .....	D2P-908 -
Spring-Compression MW ZN .....	HC162323 .....	1 .....	D2P-908 -
Switch-Roller Actuator DPDT .....	HC150478 .....	1 .....	D2P-908 -
Plunger-Side Self Dispense .....	HC137174 .....	2 .....	D2P-908 -
Guide-Assy. Push Rod .....	HC114174 .....	2 .....	D2P-908 -
Nut-HEX 1/4-20 ZN .....	HC160104 .....	2 .....	D2P-908 -
Screw-HXHM 1/4-20 x 2 ZN .....	HC160104 .....	2 .....	D2P-908 -
Spring-Compression MW ZN .....	HC162323 .....	2 .....	D2P-908 -
Switch-Roller Actuator SPDT .....	HC150477 .....	2 .....	D2P-908 -
Probe-Sensor w/6-1/2 Foot Cable .....	HC161211-01 .....	2 .....	D2P-908 -
Push Rod-Assy. Plunger Switch .....	HC113426 .....	1 .....	D2P-908 -
Receiver-3 lb. 3/8 ID Sweat w/o valve .....	HC155071 .....	1 .....	D2P-908 -
Reducer-Gear LH 5/1 (LHs) .....	HC153366 .....	1 .....	D2P-908 -
Reducer-Gear RH 5/1 (RH) .....	HC153367 .....	1 .....	D2P-908 -
Regulator-Mix Feed .....	HC137558 .....	2 .....	D2P-908 -
Relay-Compressor Start .....	HC151462 .....	1 .....	D2P-908 -
Relay-Flange Base w/cover .....	HC150381 .....	3 .....	D2P-908 -
Relay-Flange Base w/cover 3PDT .....	HC150380 .....	1 .....	D2P-908 -
Relay-Assy. Overload RF38 6.3-10A .....	HC121113 .....	1 .....	C2S-1061 -
Relay-Overload T1 6.3-10A .....	HC150069 .....	2 .....	C2S-1061 -
Lever-Assy. Reset RF38 .....	HC121077 .....	2 .....	C2S-1061 -
Lever-Assy. Reset RF38 Long .....	HC121090 .....	2 .....	C2S-1061 -
* As Required			
** Items Included In O-Ring Kit No. HC115536			
*** LH or RH — Left or right hand is determined as you face the front of the freezer.			
WC = Water Cooled AC = Air Cooled NLA = No Longer Available NLU = No Longer Used			

**Use only original or authorized replacement parts with this freezer.  
Use of unapproved parts will void warranty.**

# Alphabetized Parts List for Model SL500

*Important: All parts shown are for standard models designed for 230V/1PH/60HZ or 203-230V/3PH/60HZ.*

PART DESCRIPTION	PART NUMBER	QTY	SERIAL NUMBER (FROM – TO)
Sanitizer-Stera Sheen (Per 4 lb. jar) .....	HC158014A .....	* .....	D2P-908 -
Sanitizer-Stera Sheen (Per case/4 jars) .....	HC158014 .....	* .....	D2P-908 -
Sanitizer-Stera Sheen (Sample) .....	HC158013 .....	* .....	D2P-908 -
Scale-Overrun .....	HC158049 .....	* .....	D2P-908 -
Screw-HXHM 1/4-20 x 2 ZN (Switch Assy.) .....	HC160066 .....	3 .....	D2P-908 - A2Q
Screw-HXHM 1/4-20 x 2-1/4 ZN (Switch Assy.) .....	HC159912 .....	3 .....	A2Q -
Screw-SK Set 1/4-20 x 1/4 .....	HC160495 .....	4 .....	D2P-908 -
Screw-SK Set 5/16-18 x 3/8 .....	HC160033 .....	4 .....	D2P-908 -
Screw-SKHC #6-32 x 1 BKOX (Switch Assy.) .....	HC160381 .....	6 .....	D2P-908 -
Screw-TRPM 1/4-20x1 SST (Side Panel) .....	HC159219 .....	* .....	D2P-908 -
Screw-TRPM 1/4-20x1/2 SST (Rear Panel) .....	HC160048 .....	* .....	D2P-908 -
Screw-TRPM #10-24x1/2 SST (Front, Dispense, Trimstrip Panels) .....	HC160076 .....	* .....	D2P-908 -
Seal-Assy. Shaft Double .....	HC115525** .....	2 .....	D2P-908 -
Seal-Beater Shaft .....	HC160557 .....	2 .....	D2P-908 -
Washer-Double Shaft Seal .....	HC137593 .....	2 .....	D2P-908 -
Shaft- Assy. Beater .....	HC120866 .....	2 .....	D2P-908 -
Sheave-5/8 Bore 5.50 OD (Driven) includes .....	HC153621 .....	2 .....	D2P-908 -
Sheave-7/8 Bore 3.25 OD (Driver) includes .....	HC153626 .....	2 .....	D2P-908 -
Shroud-Assy. Condenser (Water Cooled) .....	HC120151 .....	1 .....	D2P-908 -
Shroud-Assy. Condenser (Air Cooled) .....	HC120788 .....	1 .....	D2P-908 -
Sleeve-Compressor Mounting .....	HC151479 .....	4 .....	D2P-908 -
Socket-Octal Terminal .....	HC150119 .....	2 .....	D2P-908 -
Spacer-Panel (Side Panel) .....	HC138456 .....	* .....	D2P-908 -
Spring-Compression MW ZN (Switch Assy.) .....	HC162323 .....	3 .....	D2P-908 -
Strip-Terminal .....	HC150795 .....	2 .....	D2P-908 -
Stud-Assy. Cylinder 3-15/16" .....	HC114341-05 .....	4 .....	D2P-908 -

\* As Required

\*\* Items Included In O-Ring Kit No. HC115536

\*\*\* LH or RH — Left or right hand is determined as you face the front of the freezer.

WC = Water Cooled AC = Air Cooled NLA = No Longer Available NLU = No Longer Used

**Use only original or authorized replacement parts with this freezer.  
Use of unapproved parts will void warranty.**

# Alphabetized Parts List for Model SL500

*Important: All parts shown are for standard models designed for 230V/1PH/60HZ or 203-230V/3PH/60HZ.*

PART DESCRIPTION	PART NUMBER	QTY	SERIAL NUMBER (FROM - TO)
Switch-Assy. Plunger Center .....	HC118096 .....	1 .....	D2P-908 -
Guide-Assy. Push Rod .....	HC114174 .....	1 .....	D2P-908 -
Nut-HEX 1/4-20 ZN .....	HC160104 .....	1 .....	D2P-908 -
Plate-Switch .....	HC140701 .....	1 .....	D2P-908 -
Screw-HXHM 1/4-20 x 2 ZN .....	HC160066 .....	1 .....	D2P-908 - A2Q
Screw-HXHM 1/4-20 x 2-1/4 ZN .....	HC159912 .....	1 .....	A2Q -
Screw-SKHC #6-32 x 1 BKOX .....	HC160381 .....	2 .....	D2P-908 -
Spring-Compression MW ZN .....	HC162323 .....	1 .....	D2P-908 -
Switch-Roller Actuator DPDT .....	HC150478 .....	1 .....	D2P-908 -
Washer-Flat #6 Brass .....	HC160393 .....	2 .....	D2P-908 -
Switch-Assy. Plunger Side LH .....	HC118095 .....	2 .....	D2P-908 -
Guide-Assy. Push Rod .....	HC114174 .....	2 .....	D2P-908 -
Nut-HEX 1/4-20 ZN .....	HC160104 .....	2 .....	D2P-908 -
Plate-Switch .....	HC140701 .....	2 .....	D2P-908 -
Screw-HXHM 1/4-20 x 2 ZN .....	HC160066 .....	2 .....	D2P-908 - A2Q
Screw-HXHM 1/4-20 x 2-1/4 ZN .....	HC159912 .....	2 .....	A2Q -
Screw-SKHC #6-32 x 1 BKOX .....	HC160381 .....	4 .....	D2P-908 -
Spring-Compression MW ZN .....	HC162323 .....	2 .....	D2P-908 -
Switch-Roller Actuator SPDT .....	HC150477 .....	2 .....	D2P-908 -
Washer-Flat #6 Brass .....	HC160393 .....	4 .....	D2P-908 -
Switch-Assy. Plunger Side RH .....	HC118095-01 .....	2 .....	D2P-908 -
Guide-Assy. Push Rod .....	HC114174 .....	2 .....	D2P-908 -
Nut-HEX 1/4-20 ZN .....	HC160104 .....	2 .....	D2P-908 -
Plate-Switch .....	HC140701 .....	2 .....	D2P-908 -
Screw-HXHM 1/4-20 x 2 ZN .....	HC160066 .....	2 .....	D2P-908 - A2Q
Screw-HXHM 1/4-20 x 2-1/4 ZN .....	HC159912 .....	2 .....	A2Q -
Screw-SKHC #6-32 x 1 BKOX .....	HC160381 .....	4 .....	D2P-908 -
Spring-Compression MW ZN .....	HC162323 .....	2 .....	D2P-908 -
Switch-Roller Actuator SPDT .....	HC150477 .....	2 .....	D2P-908 -
Washer-Flat #6 Brass .....	HC160393 .....	4 .....	D2P-908 -
Switch-Dispense Head Kit .....	HC116410 .....	1 .....	D2P-908 -
Switch-Roller Actuator DPDT (Center) .....	HC150478 .....	1 .....	D2P-908 -
Switch-Roller Actuator SPDT (Side) .....	HC150477 .....	2 .....	D2P-908 -
* As Required			
** Items Included In O-Ring Kit No. HC115536			
*** LH or RH — Left or right hand is determined as you face the front of the freezer.			
WC = Water Cooled AC = Air Cooled NLA = No Longer Available NLU = No Longer Used			

**Use only original or authorized replacement parts with this freezer.  
Use of unapproved parts will void warranty.**

# Alphabetized Parts List for Model SL500

*Important: All parts shown are for standard models designed for 230V/1PH/60HZ or 203-230V/3PH/60HZ.*

PART DESCRIPTION	PART NUMBER	QTY	SERIAL NUMBER (FROM – TO)
Switch-Toggle 4PDT Center OFF (AUTO/OFF/CLEAN) .....	HC150436	2	D2P-908 -
Switch-Toggle DPDT (DAY/NIGHT) .....	HC150461	2	D2P-908 -
Thermostat-1.5 Diff. (Hopper)(B-Side) .....	HC161210	2	D2P-908 -
Timer-.5-45 Delay on Break 230v .....	HC150252-01	4	D2P-908 -
Timer-5 Minute (NLU) .....	HC150218	2	D2P-908 - K2P
Tool-O-ring Removal .....	HC169374	1	D2P-908 -
Tray-Drip 22 in. Black .....	HC196270	1	D2P-908 -
Trimstrip Assy.-EF Decal 22 in. ....	HC120855	1	D2P-908 - B2Q
Decal-Trimstrip EF Logo 22" .....	HC165188-08	1	D2P-908 -
Trimstrip Assy.-EF Decal 22 in. Self Serve .....	HC120855-02	1	Optional
Decal-Trimstrip Self-Serv 22 in. ....	HC164033-03	1	Optional
Decal-Trimstrip EF Logo 22" .....	HC165188-08	1	Optional
Trimstrip-Assy. SST 22 in. without Decal .....	HC120855-01	1	B2Q -
Tube- Assy Mix Feed Self Priming Complete .....	HC120676	2	D2P-908 -
Regulator-Mix Feed .....	HC137558	2	D2P-908 -
O-ring .....	HC160607	2	D2P-908 -
Tube-Assy. Mix Feed Self Priming .....	HC120672	2	D2P-908 -
Tube-Assy. Drain 14-1/4 .....	HC115004	1	D2P-908 -
Tube-Capillary w/ strainer .....	HC155642	2	D2P-908 -
Valve-Access .....	HC155419	*	D2P-908 -
Valve-Access 3/16" x 1/4 & 3/8 Step .....	HC155497	4	D2P-908 -
Valve-Automatic Expansion (Cylinder) .....	HC155490	2	D2P-908 -
Valve-Check 5/8 OD Sweat .....	HC155487	2	D2P-908 -
Valve-Core (Use with HC155419) .....	HC155649	8	D2P-908 -

\* As Required

\*\* Items Included In O-Ring Kit No. HC115536

\*\*\* LH or RH — Left or right hand is determined as you face the front of the freezer.

WC = Water Cooled AC = Air Cooled NLA = No Longer Available NLU = No Longer Used

**Use only original or authorized replacement parts with this freezer.  
Use of unapproved parts will void warranty.**

## Alphabetized Parts List for Model SL500

*Important: All parts shown are for standard models designed for 230V/1PH/60HZ or 203-230V/3PH/60HZ.*

PART DESCRIPTION	PART NUMBER	QTY	SERIAL NUMBER (FROM - TO)
Valve-Solenoid (Cylinder)(NLU) (Use HC155395 and HC151477) .....	HC155488 .....	2 .....	D2P-908 -
Valve-Solenoid Body 3/8 ODM (Cylinder) (Use with coil HC151477) .....	HC155395 .....	2 .....	D2Q -
Valve-Solenoid 208-240v (Hopper)(NLU) (Use HC155394 and HC151477) .....	HC155707 .....	2 .....	D2P-908 -
Valve-Solenoid Body 1/4 ODM (Hopper) (Use with coil HC151477) .....	HC155394 .....	2 .....	D2Q -
Valve-Assy. Water .....	HC113709 .....	1 .....	D2P-908 -
Valve-Water .....	HC155410 .....	1 .....	D2P-908 -
Washer-Double Shaft Seal .....	HC137593 .....	1 .....	D2P-908 -
Washer-Flat #6 Brass (Switch Assy.) .....	HC160393 .....	6 .....	D2P-908 -
<p>* As Required  ** Items Included In O-Ring Kit No. HC115536  *** LH or RH — Left or right hand is determined as you face the front of the freezer.  WC = Water Cooled AC = Air Cooled NLA = No Longer Available NLU = No Longer Used</p>			

**Use only original or authorized replacement parts with this freezer.  
Use of unapproved parts will void warranty.**